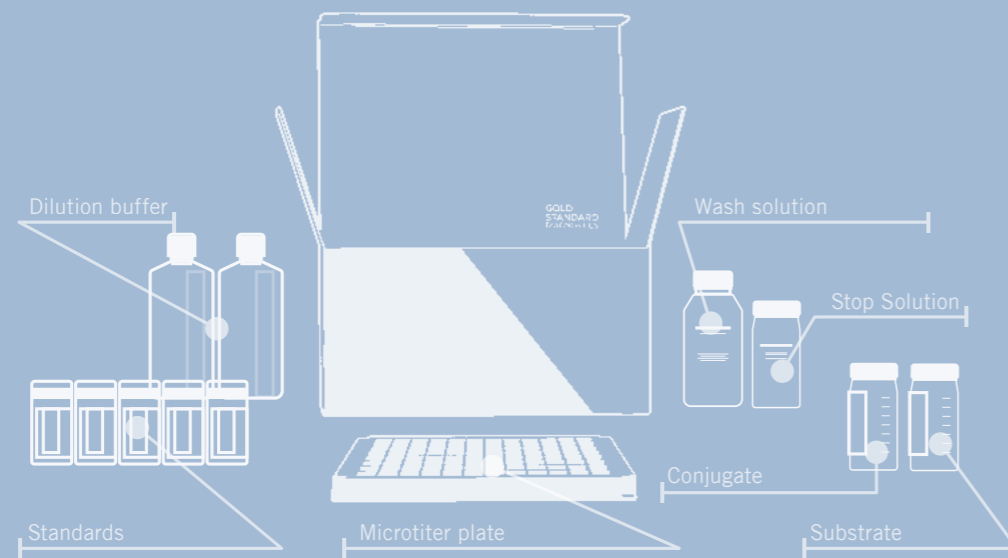


Analytical Test Kits and Instruments

Food, Feed, Animal Health and
Environmental Applications

Catalogue 2024

Find the best solution
for your testing needs



Analytical Test Kits and Instruments Catalogue 2024

Food, Feed, Animal Health and
Environmental Applications



TABLE OF CONTENTS

- Contacts and Locations 6
- ALLERGENS 8**
 - SENSISpec Allergen Detection ELISA Kits 10
 - SENSISpec Gluten Detection ELISA Kits 11
 - Supplementary Products 11
 - SENSIStrip Lateral Flow Tests 11
 - RapidScan ST5-W Lateral Flow Assay Reader 12
 - DNAllergen PCR Kits 12
 - Allergen Control Materials 12
 - SENSISwab Swabbing Solution 12
- VITAMIN ANALYSIS 14**
 - SENSISpec ELISA Vitamin Kits 15
 - SENSIColumn Vitamin Immunoaffinity Columns ... 15
- FOOD PATHOGENS 16**
 - Solutions for Enrichment 18
 - Enrichment Media for BACGene 18
 - Solutions for Analysis 18
 - Free DNA Removal 18
 - BACGene Real-Time PCR Kits 18
 - OT-2 Liquid Handler for BACGene Use **NEW!** 18
 - BACGene Accessory Items 19
 - Solutions for Confirmation 19
 - Microgen Biochemical Identification Kits 19
 - Solutions for Sampling 19
 - Microgen Path-Chek Kits 19
 - Microgen Latex Agglutination Kits **NEW!** 19
 - O157 and non-O157 STEC Identification 20
 - IMS Beads for the use with BACGene E.coli STEC Solution 20
- FOODBORNE VIRUSES 22**
 - VIRSeek Qualitative Real-Time RT-PCR 23
 - VIRSeek RNA Extraction 23
 - VIRSeek Food Process Control 23
- MYCOTOXINS 24**
 - SENSIStrip Lateral Flow Tests **NEW!** 26
 - SENSIStrip Equipment and Accessories **NEW!** 26
 - B ZERO® Quantitative ELISA Test Kits 26
 - Celer® Quantitative ELISA Test Kits 27
 - l'screen Quantitative ELISA Test Kits 27
 - Water-based Quantitative ELISA Test Kits 27
 - ABRAXIS® Patulin Test Kit 27
 - Immunoaffinity Columns 28

- GENETICALLY MODIFIED ORGANISMS (GMO) 30**
 - SpeciesScreen & SpeciesIdent 32
 - GMOScreen Kits 32
 - GMO PCR Testing Kits for Corn/Maize 33
 - GMO PCR Testing Kits for Soybean 35
 - GMO PCR Testing Kits for Canola/Rapeseed 36
 - GMO PCR Testing Kits for Cotton 37
 - GMO PCR Testing Kits for Other Species 37
 - GMO ELISA Testing Kits 40
 - GMO Lateral Flow Devices 40
 - RapidScan ST5-W Lateral Flow Assay Reader 41
 - GMO Lateral Flow Strips for RapidScan ST5-W Lateral Flow Reader 41
- NUCLEIC ACID ISOLATION 42**
 - DNA Isolation Offering 43
- VETERINARY DRUG RESIDUES AND ADDITIVES 44**
 - l'screen Quantitative ELISA Test Kits 46
 - l'screen Rapid ELISA Test Kits 46
 - Other Kits to Detect Veterinary Drug Residues and Additives 47
- BIOGENIC AMINE 47**
 - Histamine Kits 47
- ANIMAL SPECIES 48**
 - DNAnimal Kits-Multiple Targets 50
 - DNAnimal Screen Kits 50
 - DNAnimal Ident Kits 50
- ENVIRONMENT AND WATER 52**
 - Algal Toxins ELISA Plate & Tube Test Kits 54
 - ABRAXIS® Algal Toxins Dipstick Test Kits 54
 - ABRAXIS® Algal Toxins Standards 54
 - ABRAXIS® Algal Toxins QC Materials 55
 - ABRAXIS® Algal Toxins Related Products 55
 - ABRAXIS® Industrial Chemicals / Hydrocarbons ... 56
 - ABRAXIS® Industrial Chemicals / Hydrocarbons Related Products 56
 - ABRAXIS® Markers for Bioactivity 56
 - ELISA Plate, Tube & Test Strip Readers & Equipment 56
 - ABRAXIS® Pesticides 57
 - ABRAXIS® Pesticides: Glyphosate 57
 - Vitellogenins 57

- LIFE SCIENCES / R&D 58**
 - AbraMag® Magnetic Purification Kits 58
 - Magnetic Separator Racks 58
 - AbraMag® Magnetic Beads 58
- VETERINARY DIAGNOSTICS 60**
 - Serological Assays 62
 - MULTISPECIES specialities 62
 - PORCINE specialities 63
 - RUMINANTS specialities 64
 - CANINE specialities 68
 - RABBIT specialities 69
 - FELINE specialities 70
 - EQUINE specialities 70
 - VETLINE Assays 71
 - CANINE specialities 71
 - FELINE specialities 71
 - MULTISPECIES specialities 72
 - PORCINE specialities 72
 - AVIAN specialities 72
 - RUMINANT specialities 72

- Allergy Diagnostics 73
- Canine and Feline Allergy Kits and Automation 73
- Real-Time PCR Assays 74
- PCR Kits for CATTLE 74
- PCR Kits for SMALL RUMINANTS 74
- PCR Kits for SWINE 75
- PCR Kits for POULTRY 76
- PCR Kits for PETS 76
- PCR Kits for EQUINE 77
- PCR Kits for RABBIT 77
- PCR Kits for AQUACULTURE 77
- PCR Kits for MINK 77
- INSTRUMENTS 78**
 - ThunderBolt® 80
 - The Bolt™ 80
 - RapidScan ST5-W Lateral Flow Assay Reader 81
 - GSD Absorbance 96 ELISA Reader 81
 - GSD Auto-Pure 96 82
 - Real-time PCR System: AriaMX™ 82
 - OT-2 Liquid Handler for BACGene Use **NEW!** 83

Product Overview



Test Kits / Methods	ELISA	LFD	PCR	IAC	LFD Reader	ELISA Reader	ELISA Analyzer
Food Allergens	•	•	•		•	•	•
Food Pathogens	•		•			•	•
Food Viruses			•				
GMOs	•	•	•		•	•	
Mycotoxins	•	•		•	•	•	•
Vet Drug Residues	•					•	•
Animal Species			•				
Vet Diagnostics	•	•	•			•	•
Vitamin Analysis	•			•		•	
Pesticides	•	•			•	•	•
Environment & Water	•	•			•	•	•

FIND THE BEST SOLUTION

for your in-house testing operations

Rapid testing technologies: a growing market

The on-site testing solutions market has seen significant growth over the past few years, including not only food and feed analysis but environmental and clinical samples as well.

The growth is attributed to the customers' need for fast and reliable test results as these in-house testing laboratories face mounting pressure to meet new regulatory and customer standards, all the while ensuring quality and the timely release of safe product.

How can Gold Standard Diagnostics help you?



Test Kits



Automation



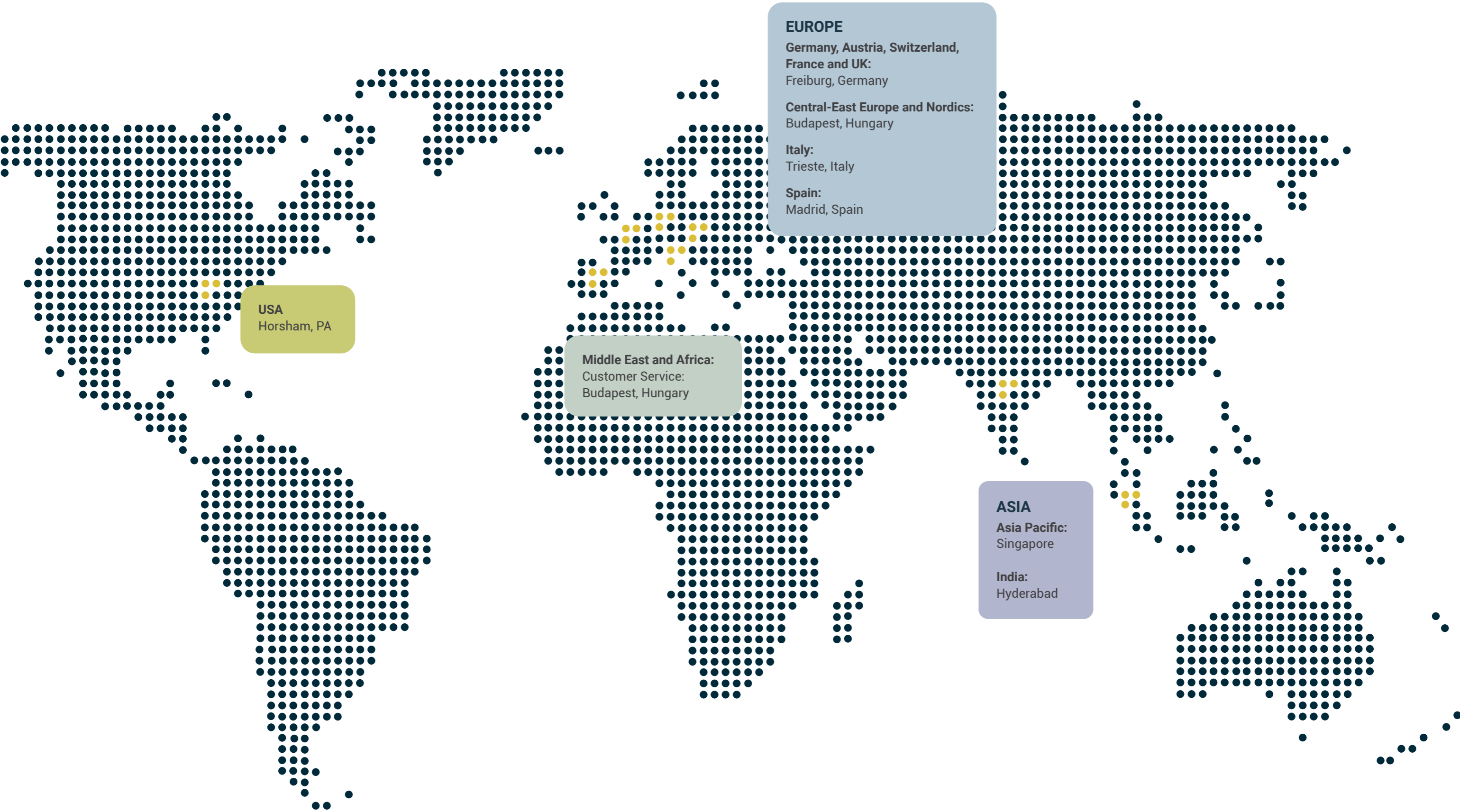
Services

We are a global provider of fast, reliable, and easy to use test kits and instruments in the fields of bioanalytical testing for the food, feed, environmental, biopharma, and clinical industries. The in-house R&D teams have expertise in developing a wide range of innovative methods and applications to meet the testing needs of both research and industry.

Our experts are able to customize programs to serve specific needs with competitive pricing and high quality standards.

WHERE WE ARE

Our entities serve more than 100 countries worldwide.



ALLERGENS

Food allergens are proteins in food which can trigger allergic, sometimes even life-threatening, reactions in sensitised individuals. 90% of all food allergies are caused by the following eight common food categories: milk, eggs, peanuts, fish, shellfish, tree nuts, wheat and soy.

Managing food allergies usually means completely eliminating the allergenic proteins from one's diet, requiring strict traceability throughout the food production process, from raw materials to the final product. Beside EU Regulation No. 1169/2011, many other legislations worldwide require food manufacturers to label their products with all ingredients potentially capable of causing allergic reactions.

We provide the most comprehensive offering for food allergen rapid testing, including test kits, easy to use instruments, trainings and services, to suit your actual capabilities and needs.



CUSTOMIZED SOLUTIONS FOR YOUR ALLERGEN TESTING NEEDS

RAPID TEST KITS

SENSISpec ELISA Kits



Quick and sensitive method with low limits of detection.

Broad portfolio including AOAC approved Gluten R5 kit.

DNAllergen PCR Kits



Capable to detect specific allergens with no cross-reactivity.

SENSIStrip LFD Kits



New Power Line LFD kits for the detection of the Hook effect. Get highly reliable results in 20 min.

AUTOMATION & SERVICES

ThunderBolt® and The BOLT™ ELISA Analyzers



Automation for all the steps of any plate-based assay from premixing to final data handling. Validated for SENSISpec Allergen ELISA kits.

RapidScan ST5-W LFD Reader



Highly flexible, easy to use and accurate imaging platform for lateral flow assay analysis providing semi-quantitative results. Specifically designed for field and in-process testing.

Services

Maintenance and support; trainings; method development and validation (for ELISA kits on ThunderBolt® and The BOLT™).

SENSISpec Allergen Detection ELISA Kits



Product	LOD (ppb)	Quantitation range	No. of wells	Article No.
SENSISpec ELISA Almond	200	0.4 - 10 ppm	96 48	HU0030001 HU0030025
SENSISpec ELISA Beta-Lactoglobulin	1.5	10 - 400 ppb	96 48	HU0030002 HU0030026
SENSISpec ELISA Buckwheat	Coming soon!		96 48	HU0030144 HU0030145
SENSISpec ELISA Casein	40	0.2 - 6 ppm	96 48	HU0030003 HU0030027
SENSISpec ELISA Cashew	200	2 - 60 ppm	96 48	HU0030004 HU0030028
SENSISpec ELISA Coconut	400	2 - 30 ppm	96 48	HU0030005 HU0030029
SENSISpec ELISA Crustaceans (Tropomyosin)	0.9	20 - 400 ppb	96 48	HU0030006 HU0030030
SENSISpec ELISA Egg White	50	0.4 - 10 ppm	96 48	HU0030007 HU0030031
SENSISpec ELISA Fish (Parvalbumin)	1400	4 - 100 ppm	96 48	HU0030008 HU0030032
SENSISpec ELISA Gliadin/Gluten	300	2 - 60 ppm	96 48	HU0030009 HU0030033
SENSISpec ELISA Hazelnut	300	1 - 40 ppm	96 48	HU0030010 HU0030034
SENSISpec ELISA Lupin	200	2 - 30 ppm	96 48	HU0030011 HU0030035
SENSISpec ELISA Lysozyme	2	25 - 250 ppb	96 48	HU0030012 HU0030036
SENSISpec ELISA Macadamia nut	100	1 - 40 ppm	96 48	HU0030013 HU0030037
SENSISpec ELISA Milk	50	0.4 - 10 ppm	96 48	HU0030014 HU0030038
SENSISpec ELISA Molluscs (Tropomyosin)	1.7	10 - 400 ppb	96 48	HU0030015 HU0030039
SENSISpec ELISA Mustard	1000	2 - 60 ppm	96 48	HU0030016 HU0030040
SENSISpec ELISA Ovalbumin	4	25 - 500 ppb	96 48	HU0030017 HU0030041
SENSISpec ELISA Brazil nut	200	1 - 40 ppm	96 48	HU0030018 HU0030042
SENSISpec ELISA Pea	Coming soon!		96 48	HU0030146 HU0030147
SENSISpec ELISA Peanut	100	1 - 40 ppm	96 48	HU0030019 HU0030043
SENSISpec ELISA Pecan nut	200	2 - 60 ppm	96 48	HU0030020 HU0030044
SENSISpec ELISA Pistachio	130	1 - 40 ppm	96 48	HU0030021 HU0030045
SENSISpec ELISA Sesame	200	2 - 30 ppm	96 48	HU0030022 HU0030046
SENSISpec ELISA Soy	16	40 - 1000 ppb	96 48	HU0030023 HU0030047
SENSISpec ELISA Total Soy	200	2 - 36 ppm	96 48	HU0030075 HU0030076
SENSISpec ELISA Walnut	350	2 - 60 ppm	96 48	HU0030024 HU0030048

Spike solutions are available for all allergen ELISA kits.

SENSISpec Gluten Detection ELISA Kits



Product	LOD (ppb)	Quantitation range	No. of wells	Article No.
SENSISpec INgezim Gluten R5 - AOAC certified	3000	3-200 ppm	96	30.GLU.K.2.
SENSISpec INgezim Gluten Quick	3000	3-200 ppm	96	30.GL2.K.2.
SENSISpec INgezim Hydrolyzed Gluten	250	0.25-200 ppm	48	30.GLH.K.2.
SENSISpec INgezim Gluten Semi Q	10000	10-800 ppm	32	30.GSQ.K.2.

Supplementary Products

Product	Quantity	Article No.
SENSISpec Wash Buffer	60 ml	HU0030074
SENSISpec Extraction Additive	100 g	HU0030100
SENSISpec Ingezim Gluten Extraction Additive	110 ml 1 L	HU0030105 HU0030103

SENSIStrip Lateral Flow Tests



Product	LOD Food matrix	LOD ($\mu\text{g}/\text{cm}^2$) Surface	No. of tests	Article No.
SENSIStrip Almond	2.5 ppm	0.007 $\mu\text{g}/\text{cm}^2$	20	HU0030110
SENSIStrip Beta-Lactoglobulin	100 ppb	0.27 ng/cm ²	20	HU0030111
SENSIStrip Casein	0.5 ppm	0.001 $\mu\text{g}/\text{cm}^2$	20	HU0030112
SENSIStrip Cashew	2.5 ppm	0.007 $\mu\text{g}/\text{cm}^2$	20	HU0030113
SENSIStrip Coconut	5 ppm	0.013 $\mu\text{g}/\text{cm}^2$	20	HU0030114
SENSIStrip Crustaceans (Tropomyosin)	25 ppb	0.2 ng/cm ²	20	HU0030115
SENSIStrip Egg White	0.5 ppm	0.001 $\mu\text{g}/\text{cm}^2$	20	HU0030116
SENSIStrip Fish	6 ppm	16 ng/cm ²	20	HU0030117
SENSIStrip Gluten	4 ppm	1.6 ng/cm ²	20	HU0030118
SENSIStrip Gluten PowerLine NEW!	4 ppm	1.6 ng/cm ²	20	HU0030134
SENSIStrip Hazelnut	2.5 ppm	0.007 $\mu\text{g}/\text{cm}^2$	20	HU0030119
SENSIStrip Lupin	0.3 ppm	0.13 ng/cm ²	20	HU0030120
SENSIStrip Lysozyme	50 ppb	0.13 ng/cm ²	20	HU0030121
SENSIStrip Macadamia nut	2.5 ppm	0.007 $\mu\text{g}/\text{cm}^2$	20	HU0030122
SENSIStrip Milk Protein	1 ppm	0.003 $\mu\text{g}/\text{cm}^2$	20	HU0030123
SENSIStrip Multi Tree Nut NEW!	N/A	0.16 $\mu\text{g}/\text{cm}^2$	20	HU0030136
SENSIStrip Mustard	2.5 ppm	0.007 $\mu\text{g}/\text{cm}^2$	20	HU0030125
SENSIStrip Ovalbumin	0.1 ppm	0.001 $\mu\text{g}/\text{cm}^2$	20	HU0030126
SENSIStrip Brazil nut	2.5 ppm	0.007 $\mu\text{g}/\text{cm}^2$	20	HU0030127
SENSIStrip Peanut	2.5 ppm	0.007 $\mu\text{g}/\text{cm}^2$	20	HU0030128
SENSIStrip Pecan nut	2.5 ppm	0.007 $\mu\text{g}/\text{cm}^2$	20	HU0030129
SENSIStrip Pistachio	2.5 ppm	0.007 $\mu\text{g}/\text{cm}^2$	20	HU0030130
SENSIStrip Sesame	2.5 ppm	0.007 $\mu\text{g}/\text{cm}^2$	20	HU0030131
SENSIStrip Soy PowerLine NEW!	2.5 ppm	0.007 $\mu\text{g}/\text{cm}^2$	20	HU0030135
SENSIStrip Total Soy	2.5 ppm	0.007 $\mu\text{g}/\text{cm}^2$	20	HU0030132
SENSIStrip Walnut	2.5 ppm	0.007 $\mu\text{g}/\text{cm}^2$	20	HU0030133

RapidScan ST5-W Lateral Flow Assay Reader



Product	Product description	Article No.
RapidScan ST5-W Lateral Flow Assay Reader	Portable instrument specifically designed for field and in-process testing applications requiring qualitative to semi-quantitative test results. Compatible with Gold Standard Diagnostics' allergen, GMO, glyphosate and algal toxins lateral flow tests.	LFRSCAN002
LFD Reader Adapter for allergen strips	Adapter for SENSIS <i>Strip</i> allergens LFDs, for use with RapidScan ST5-W LFD Reader	LFA0030001

DNAllergen PCR Kits

Article No.	Product Name	Article No.	Product Name
HU0030189	DNAllergen Almond	HU0030194	DNAllergen Mustard
HU0030190	DNAllergen Celery	HU0030195	DNAllergen Oat
HU0030191	DNAllergen Fish	HU0030196	DNAllergen Peanut
HU0030192	DNAllergen Hazelnut	HU0030197	DNAllergen Sesame
HU0030193	DNAllergen Molluscs	HU0030198	DNAllergen Soy

Allergen Control Materials

Product	To apply with Allergen ELISA Kits	Article No.
Allergen Control Material – Key Allergens	Beta-Lactoglobulin, Casein, Egg White, Gluten, Milk, Soy, Total Soy	HU0030140
Allergen Control Material – Maritime	Crustaceans, Fish, Molluscs	HU0030141
Allergen Control Material – Seeds	Lupin, Mustard, Sesame	HU0030143
Allergen Control Material – Nuts	Almond, Brazil nut, Cashew, Coconut, Hazelnut, Macadamia, Peanut, Pecan, Pistachio, Walnut	HU0030142

SENSISwab Swabbing Solution

Product	Product description	No. of swabs	Article No.
SENSISwab kit	10 ml Swabbing solution, 5 Swabs, 5 Sample tubes	5	HU0030101
	10x5: multipack of 10 Swab kits	50	HU0030102





VITAMIN ANALYSIS

Vitamins are essential nutrients for the growth, development, and maintenance of cells, tissues, and organs. Vitamins are classified as either water-soluble or fat-soluble. For humans, there are 13 vitamins: 4 fat-soluble (A, D, E, and K) and 9 water-soluble (8 B vitamins and vitamin C). These nutrients are typically obtained through the consumption of food or dietary supplements, which are subject to vitamin testing in order to meet specific labeling requirements.

We offer ELISA kits and immunoaffinity columns (IAC) for the detection and purification of the following vitamins: Biotin (Vitamin H or Vitamin B7), Folic acid and Vitamin B12.

SENSISpec ELISA Vitamin Kits



Product name	LOD (ppb)	Quantitation range	No. of wells	Article No.
SENSISpec ELISA Vitamin B12	Depends on the sample preparation	0,4-40 ng/ml	96	HU0030400
SENSISpec ELISA Biotin (Vitamin B7)	Depends on the sample preparation	1-25 ng/ml	96	HU0030401
SENSISpec ELISA Folic Acid	Depends on the sample preparation	4-400 ng/ml	96	HU0030402

SENSIColumn Vitamin Immunoaffinity Columns



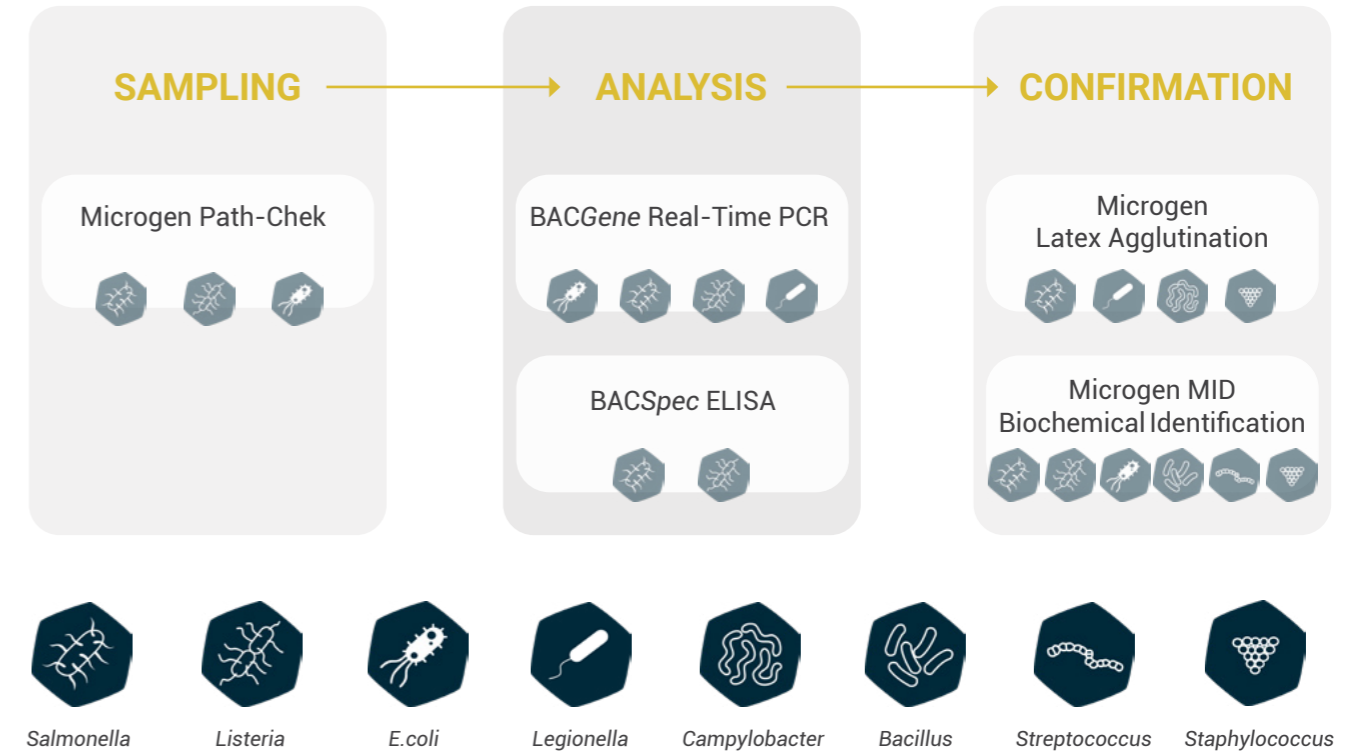
Product name	Product description	Quantity	Article No.
SENSIColumn IAC Biotin*	Determination of Biotin in vitamin tablets, liquid vitamin preparations, cell culture extracts etc.	3 ml x 50 columns	EFSA3175
SENSIColumn IAC Vitamin B12	Determination of Vitamin-B12 (Cyanocobalamin) in vitamin tablets, liquid vitamin preparations, cell culture extracts etc.	3 ml x 50 columns	BTCA3185
SENSIColumn IAC Folic Acid	Determination of folic acid in vitamin tablets, liquid vitamin preparations, cell culture extracts etc.	3 ml x 50 columns	BTFS3195
*FITC-streptavidin-conjugate	Conjugate	1 mg x 25 vials	FITC-SA-Kon



FOOD PATHOGENS

Foodborne illness is often caused by consuming food contaminated with bacteria and/or their toxins, parasites, viruses, chemicals, or other agents. The detection of these harmful food pathogens is essential in order to protect consumers against possible health consequences and to minimize risks and costs for the food industry.

Food Pathogen Kits From Sampling to Confirmation



Our kits for the detection of food pathogens offer laboratories fast and reliable results. With their flexible design, they are well suited for both high and low volume laboratories. In order to guarantee utmost reliability, most of our kits maintain certifications from internationally recognized organizations (AFNOR and/or AOAC) certified on various different food matrices. Please refer to your local sales support for more detailed information.

BACGene Real-Time PCR Solution

- Short TTR - one day meat analysis
- Harmonized enrichment conditions per pathogen certified by Afnor and AOAC PTM
- Open platform (Agilent AriaMX™ and Bio-Rad CFX96™) - certified solutions with harmonized profiles enabling mixed plates
- Automation solution available from sample input up to PCR plate preparation
- Minimal human intervention for data analysis using PURE software

Microgen Kits

Microgen Biochemical Identification

- Cost-effective and accurate
- Software available (MID60)
- No additional equipment needed (only incubator)

Microgen Latex Agglutination

- One of the most inclusive kits in the market
- Highly sensitive and specific

Microgen Path-Chek

- Rapid and cost-effective
- Easy to use



Solutions for Enrichment

Enrichment Media for BACGene*

Product	Quantity	Article No.
BACGro™ ULTRA Listeria Broth	5 kg	1705
BACGro™ ULTRA Listeria Broth	10 kg	1710
Actero™ Listeria Enrichment Media	500 g bottle	5613902001
Actero™ Listeria Enrichment Media	2 kg	5613902002
Actero™ Listeria Enrichment Media	10 kg	5613902010



Solutions for Analysis

Free DNA Removal

Product	Product description	No. of reactions	Article No.
PREraser BACGene	Elimination of free DNA from pathogen enrichments to be used in combination with BACGene kits	2 x 48 10 x 2 x 48	5123222301 5123222311

BACGene Real-Time PCR Kits

Product	Product description	No. of reactions	Article No.
BACGene Salmonella spp.	Real-time PCR for the detection of <i>Salmonella</i> spp. AOAC-PTM (#121501), NF VALIDATION (EGS 38/01-03/15)	96 10 x 96	5123221801 5123221811
BACGene Salmonella Tranoroa	Real-time PCR for the identification of serovar <i>Salmonella enterica</i> subsp. <i>salmatae</i> serovar Tranoroa as a process control measure	48	5123222801
BACGene Listeria Multiplex	Real-time PCR for the detection of <i>Listeria monocytogenes</i> and <i>Listeria</i> spp. AOAC-PTM (#061701), NF VALIDATION (EGS 38/05-03/17)	96 10 x 96	5123221901 5123221911
BACGene Listeria spp.	Real-time PCR for the detection of <i>Listeria</i> spp. AOAC-PTM (#061702), NF VALIDATION (EGS 38/02-01/17)	96 10 x 96	5123222101 5123222111
BACGene Listeria <i>monocytogenes</i>	Real-time PCR for the identification of <i>Listeria monocytogenes</i> . AOAC-PTM (#061703), NF VALIDATION (EGS 38/03-01/17)	96 10 x 96	5123222001 5123222011
BACGene <i>E.coli</i> O157:H7	Real-time PCR for the identification of <i>E. coli</i> O157:H7. AOAC-PTM (#22002), NF VALIDATION (EGS 38/06-11/19)	96 10 x 96	5123222701 5123222711
BACGene Mplex STEC Screen	Real-time PCR for the detection of STEC virulence genes <i>stx1</i> , <i>stx2</i> and <i>eae</i> . AOAC-PTM (#22003)	96 10 x 96	5123223001 5123223011
BACGene Mplex STEC SEROtype1	Real-time PCR for the identification of three of the Top6 STEC serogroups. (O111, O103, O26) AOAC-PTM (#22003)	48	5123223101
BACGene Mplex STEC SEROtype2	Real-time PCR for the identification of three out of the Top6 STEC serogroups. (O145, O121, O45) AOAC-PTM (#22003)	48	5123223201

OT-2 Liquid Handler for BACGene Use **NEW!**

Product	Product description	Article No.
OT-2 Starter package	OT-2 liquid handler including respective modules and pipettes to run BACGene workflow in an automated setup.	HU0060910
P20 - 20 µL tip box (96)	Filter tips for P20 usage	HU0060906
P300 - 200 µL tip box (96)	Filter tips for P300 usage	HU0060907
Service Package	Yearly maintenance checks	HU0060908

PURE software analysis coming soon!



BACGene Accessory Items

Product	Quantity	Article No.
MicroAmp Cap Installing Tool for use with BACGene kits for PCR or for lysis		5613900401
Domed caps for Lysis Plate (DNA extraction), 300 x 8 cap strips	300 x 8 cap strips	5613900301
Yellow PCR Support Grids, pack with 8 grids	8 grids	5617702208
Blue PCR Support Grids, pack with 8 Grids	8 grids	5617702209
Optical caps, for use with PCR plate, 1 bag with 120 strips	120 strips	5627710010
Blue cooling block 96 well for lysis		5613900501
PCR rack – yellow, 1x96, lid included		5613901301
Lysis rack – blue, 1x96, lid included		5613901401



Solutions for Confirmation

Microgen Biochemical Identification Kits

A range of simple, reliable, bacterial identification systems for food industry. Identify the pathogen grown in plates, based on a change of colour of the system.

Product	Description	Article No.
Microgen Listeria-ID	Identification system for <i>Listeria</i> spp., 20 tests	MID67
Microgen GN-ID A	Identification system for commonly encountered Enterobacteriaceae, 60 tests	MID64
Microgen GN-ID B	Identification system for commonly encountered Enterobacteriaceae and Oxidase positive, 24 tests	MID65



Solutions for Sampling

Microgen Path-Chek Kits

Easy-to-use tests for pathogen detection and food residues from work surfaces and the processing environment. Ensure your regular cleaning processes with this rapid and cost effective solution.

Product	Description	Article No.
Path-Chek Listeria	Specific media swab-tubes for the detection of <i>Listeria</i> spp. in surfaces, 100 units	PC080
Path-Chek Salmonella	Specific media swab-tubes for the detection of <i>Salmonella</i> spp. in surfaces, 100 units	PC020
Path-Chek Coliforms	Specific media swab-tubes for the detection of Coliforms in surfaces, 100 units	PC010
Path-Chek Swabs	Pre-moistened swab, for use in combination of the Path-Chek identification media tests, 100 units	PCS100
Path-Chek Protein	Rapid test for the detection of food residues from environmental surfaces or processing equipment, 50 units, 100 tests	PC006
Path-Chek Heat Bath	Thermal Bath for laboratory incubations, Temp. range: 5-100°C	PC-HB1

Microgen Latex Agglutination Kits **NEW!**

Confirmation of pathogenic bacteria in only two minutes. Identification of colonies grown in a selective media with an easy-to-use but highly sensitive and specific solution.

Product	Description	Article No.
Microgen Legionella Latex	Rapid latex agglutination test for the confirmation of presumptive <i>Legionella</i> colonies, 50 units	M45
Microgen Campylobacter Latex*	Rapid latex agglutination test for the confirmation of presumptive <i>Campylobacter</i> colonies, 50 units	F46
Microgen Salmonella Latex	Rapid latex agglutination test for the confirmation of presumptive <i>Salmonella</i> colonies, 50 units	F42
Microgen Staphylococcus Latex	Rapid latex agglutination test for the confirmation of presumptive <i>Staphylococcus</i> colonies, 50 units	M43

*will be launched soon

0157 and non-0157 STEC Identification

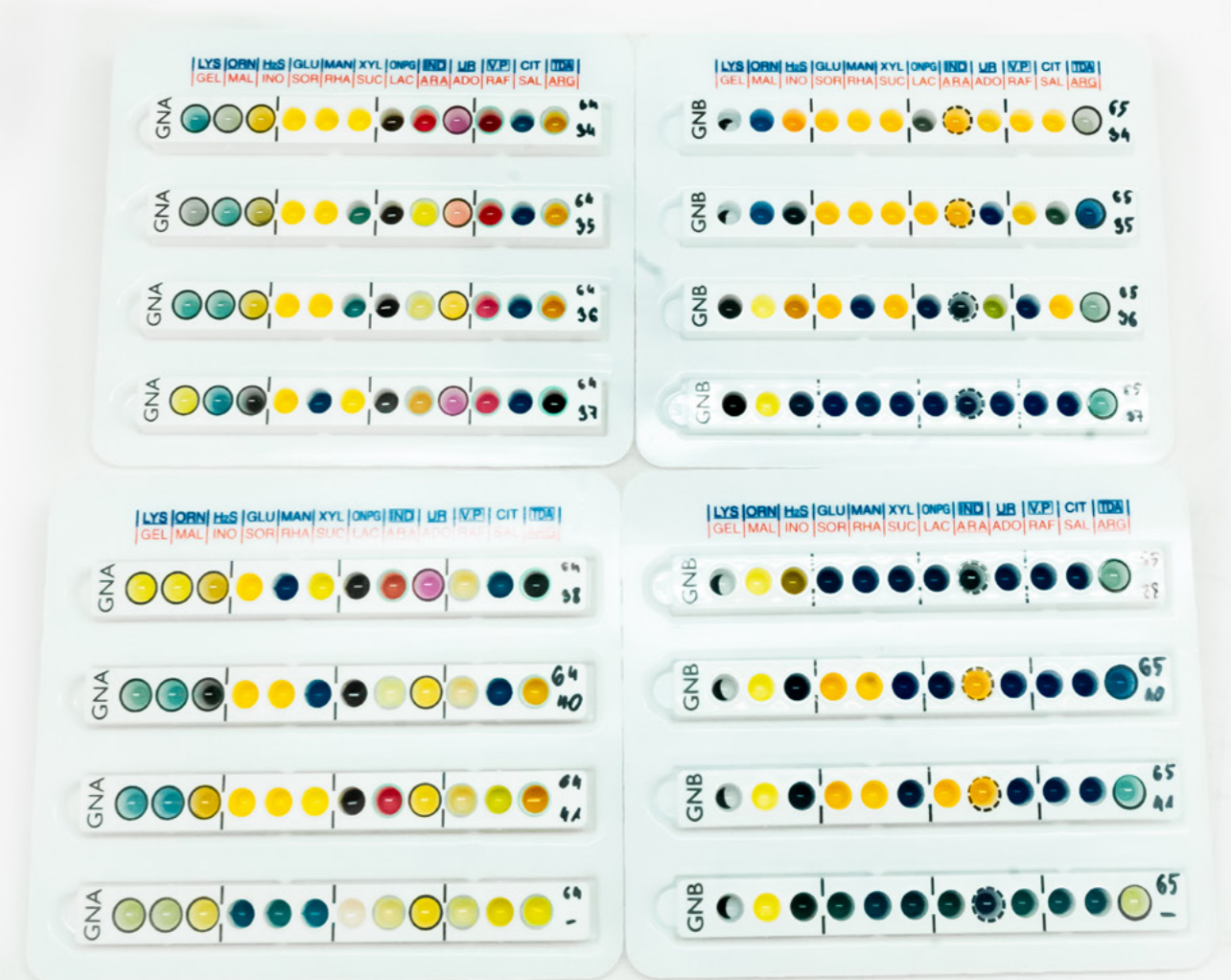
Whether your needs are food safety, compliance, quality assurance, or research, *E. coli* test kits and antibodies provide an extended offering of affordable test solutions for numerous formats such as ELISA, western blot, lateral flow, agglutination, immunoseparation, flow cytometry, and immunofluorescence.

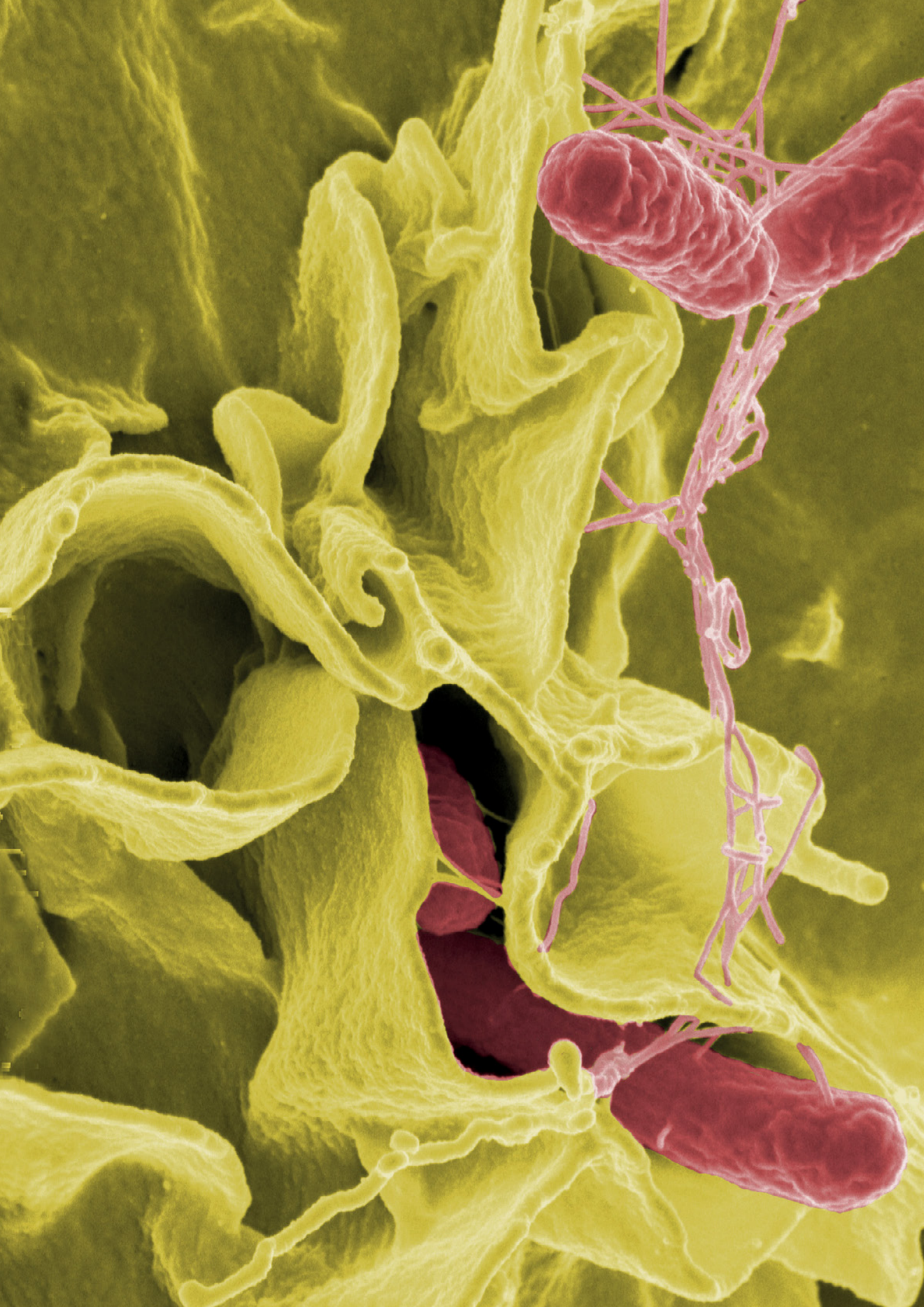
Product	Product Format	Quantity	Article No.
<i>E. coli</i> O26	Latex Agglutination	50 tests	541000
<i>E. coli</i> O45	Latex Agglutination	50 tests	541010
<i>E. coli</i> O103	Latex Agglutination	50 tests	541020
<i>E. coli</i> O104:H4*	Latex Agglutination	50 tests	541060
<i>E. coli</i> O111	Latex Agglutination	50 tests	541030
<i>E. coli</i> O121	Latex Agglutination	50 tests	541040
<i>E. coli</i> O145	Latex Agglutination	50 tests	541050
<i>E. coli</i> O157:H7	Latex Agglutination	50 tests	541070

IMS Beads for the use with BACGene *E. coli* STEC Solution

Product	Product Format	Quantity	Article No.
<i>E. coli</i> O26	Immunomagnetic Beads	2 ml	5623723601
<i>E. coli</i> O45	Immunomagnetic Beads	2 ml	5623723501
<i>E. coli</i> O103	Immunomagnetic Beads	2 ml	5623723401
<i>E. coli</i> O111	Immunomagnetic Beads	2 ml	5623723301
<i>E. coli</i> O121	Immunomagnetic Beads	2 ml	5623723201
<i>E. coli</i> O145	Immunomagnetic Beads	2 ml	5623723101
<i>E. coli</i> O157:H7	Immunomagnetic Beads	2 ml	5623723001

*Minimum order quantity: 5 kits





FOODBORNE VIRUSES

Due to a large number of viral food-related outbreaks, the detection of viruses in food is an important issue in food safety. Oftentimes even low concentrations of a virus can lead to severe health consequences, such as gastrointestinal or liver infections.

VIRSeek Solution: Viral Foodborne Pathogen Detection

The VIRSeek Solution offers an all-inclusive, ISO-15216 compliant workflow from the RNA extraction to the specific detection of norovirus genogroup I, norovirus genogroup II and hepatitis A virus. In addition, the process control murine norovirus (MNV) ensures the monitoring of the RNA isolation procedure.

Each of the VIRSeek Solution kits can be used individually or as part of the comprehensive workflow validated for Agilent AriaMx™ and Bio-Rad CFX96™ (Standard and Deep Well).



VIRSeek Qualitative Real-Time RT-PCR

Product	Product description	No. of reactions	Article No.
VIRSeek Food Norovirus Genogroup I (NoVGI)	Real-time RT-PCR rapid detection of Norovirus Genogroup I (NoVGI) in food samples.	48	5728200201
VIRSeek Food Norovirus Genogroup II (NoVGII)	Real-time RT-PCR rapid detection of Norovirus Genogroup II (NoVGII) in food samples.	48	5728200301
VIRSeek Food Hepatitis A Virus (HAV)	Real-time RT-PCR rapid detection of Hepatitis A virus (HAV) in food samples.	48	5728200101
VIRSeek Food Hepatitis E Virus (HEV)	Real-time RT-PCR kit for rapid detection of Hepatitis E virus (HEV) in food samples.	48	5728200501

VIRSeek RNA Extraction

Product	Product description	No. of reactions	Article No.
VIRSeek RNAExtractor Food	Manual extraction of viral RNA via silica-coated magnetic beads from different food products (incl. soft fruit, leaf, stem and bulb vegetables, bottled water and bivalve molluscan shellfish) in alignment with ISO requirements.	48 x 500 µl or 96 x 250 µl sample input volume	5524401501

VIRSeek Food Process Control

Product	Product description	No. of reactions	Article No.
VIRSeek Murine Norovirus (MNV) Process Control	Real-time RT-PCR kit for rapid detection of Murine Norovirus MNV. Virus/positive control included.	48	5728200401

In case you are looking for SARS-CoV-2 detection in wastewater samples, please reach out to us.



MYCOTOXINS

Mycotoxins are toxic secondary metabolites produced by moulds, which grow on a variety of different crops and foodstuffs such as cereals, nuts, spices, dried fruits, apples and coffee beans. Mycotoxins pose a health threat to humans, pets and livestock, potentially causing a number of adverse health effects. It's not only plant-based foods that are at risk; milk may also have a presence of aflatoxin M1, the concentration of which depends on the aflatoxin ingested by the dairy cows through their foodstuffs.

We provide comprehensive solutions for mycotoxin screening, from on-site early detection by rapid tests to a variety of cost-efficient, high-throughput ELISA kits and analyzers, and even clean-up devices for laboratories performing confirmational verifications through instrumental analysis. Our on-field trainings and R&D services to customize, verify and validate our customers' applications complete the product offering.

FROM FARM TO LAB: OUR TECHNOLOGIES SUPPORT YOUR ROUTINE



TEST KITS

- **Lab-in-a-hand SENSIStrip LFD kits**
Quantitative, reliable analysis of deoxynivalenol and total aflatoxins in 7 minutes, sample preparation included
- **Cost-efficient B ZERO® ELISA test kits**
Master-curve calibrated plate-based assays remove hidden costs for calibration to cut the cost of quality assurance
- **Harmonized and rapid Celer® ELISA test kits**
Flexible multiplex platform based on one single sample preparation
- **Water-based H2 ELISA test kits**
Solvent-free analysis of deoxynivalenol and total aflatoxins
- **High sensitivity I'screen ELISA test kits**
Quantitative screening of aflatoxin M1 in milk and dairy products



INSTRUMENTS & AUTOMATION

- **RapidScan ST5-W LFD Reader**
Highly flexible, easy-to-use and accurate imaging platform for mycotoxins, pesticides, allergens and GMO screening
- **GSD Absorbance 96 ELISA Reader**
The most compact plate reader with easy plug-and-play feature
- **ThunderBolt® and The BOLT™ ELISA Analyzers**
Automation for all the steps of any plate-based assay, from premixing to final data handling
Validated for B ZERO® and Celer® ELISA kits



CLEAN UP DEVICES

- **NEW SENSIPure Immunoaffinity Columns**
Extended quality control devices to support your laboratory routine
- **Comprehensive portfolio of SENSIColumns**



SERVICES

- **R&D customized development**
Trust our 30-year experience in the mycotoxins field and ask our experts for customised solutions to boost your analytical routine

SENSIStrip Lateral Flow Tests **NEW!**



Article No.	Product Name	Target	No. of Tests	Applications
R.30.AFL.K42/20	SENSIStrip AFLA	Total aflatoxin	20	Corn, Barley, Sorghum, Oat Groats, Wheat, Brown Rice, Soybeans, Cow Feed, Peanut, Corn Gluten Meal
R.30.AFL.K42/100	SENSIStrip AFLA	Total aflatoxin	100	
R.30.DON.K42/20	SENSIStrip DON	Deoxynivalenol	20	Corn, Corn Germ, Corn Gluten Meal, Wheat, Whole Oats, Durum Wheat, Sorghum, Brown Rice, Barley, Rye
R.30.DON.K42/100	SENSIStrip DON	Deoxynivalenol	100	

SENSIStrip Equipment and Accessories **NEW!**



Article No.	Product Name	Description
LFRSCAN002	RapidScan ST5-W Lateral Flow Assay Reader	Gold Standard Diagnostics strip reader, suitable for allergens, GMO, pesticides and mycotoxins digital analysis
LFA004002	RapidScan Reader Adapter for SENSIStrip Mycotoxin Strips	Adapter for RapidScan to enable the use with mycotoxin strips
LFRINC002	MiniT Incubator for SENSIStrip Mycotoxin Strips	Compact incubator to standardize the performance in any environmental conditions
HU0040302	Mini-Centrifuge	Optional item to speed up the sample preparation: compact mini-centrifuge for 1.5-2 ml tubes equipped with adapter, fixed speed at 10,000 rpm
R.00.049.3923002	Extraction powder for 50g, compatible with SENSIStrip Mycotoxin Strips, 10 det	Extraction powder bags to analyse 50 g following the USDA – FGIS requirements

B ZERO® Quantitative ELISA Test Kits



Product	Target	Product description	No. of wells	Article No.
B ZERO® AFLA B1	Aflatoxin B1	Methanol-based assay for the specific detection of aflatoxin B1 in corn, sorghum, high moisture corn, silage and mash, feed, hazelnuts, pistachios, peanuts, almonds, raisins, figs, DDGS, cottonseed, soy, soybean meal.	48	HU0040025
B ZERO® AFLA M1 500	Aflatoxin M1	Fast assay for the quantitative detection of aflatoxin M1 in milk according to the Codex Alimentarius Regulation (FDA action limit)	96	HU0040091
B ZERO® AFLA M1	Aflatoxin M1	Sensitive assay for the quantitative research of aflatoxin M1 in milk and dairy products with compliant sensitivity to EU regulation.	192 96 48	HU0040043 HU0040003 HU0040023
B ZERO® DON v2	Deoxynivalenol	Methanol-based assay for the detection of deoxynivalenol in cereals, feed, DDGS with shared sample preparation with other B ZERO assays	48	HU0040028
B ZERO® ZEA	Zearalenone	Methanol-based assay for the detection of zearalenone in cereals, feed and DDGS	48	HU0040027
B ZERO® FUMO	Fumonisin	Methanol-based assay for the detection of fumonisin in maize and feed.	48	HU0040034
B ZERO® OCHRA	Ochratoxin	Methanol-based assay for the detection of ochratoxin in cereals	48	HU0040035
B ZERO® T2	T-2 and HT-2 toxins	Methanol-based assay for the detection of both T-2 and HT-2 metabolite in cereals and feed	48	HU0040036

Celer® Quantitative ELISA Test Kits



Product	Target	Product description	No. of wells	Article No.
Celer® AFLA B1	Aflatoxin B1	Methanol-based assay for the specific detection of aflatoxin B1 in corn, sorghum, high moisture corn, silage and mash, feed, hazelnuts, pistachios, peanuts, almonds, raisins, figs, DDGS, cottonseed, soy, soybean meal.	96 192	HU0040004 HU0040044
Celer® AFLA	Aflatoxins	Methanol-based assay for the detection of total aflatoxins in cereals, corn germ, feed, cottonseed, nuts, dried fruits, paprika, chilli, ginger.	96 192	HU0040011 HU0040051
Celer® AFLA HS	Aflatoxins	High sensitivity methanol-based assay for the detection of total aflatoxins in maize, corn germ, corn silage, corn gluten meal, sorghum, brown rice, soybean meal, bovine feed, feed, DDGS, pistachio, peanut, cottonseed.	96 192	HU0040097 HU0040098
Celer® AFLA M1 500	Aflatoxin M1	Fast assay for the quantitative detection of aflatoxin M1 in milk according to the Codex Alimentarius Regulation (FDA action limit)	96	HU0040081
Celer® DON v3	Deoxynivalenol	Methanol-based assay for the detection of deoxynivalenol in cereals, feed, DDGS	96 192	HU0040009 HU0040049
Celer® ZEA	Zearalenone	Methanol-based assay for the detection of zearalenone in cereals, feed and DDGS	96 192	HU0040006 HU0040046
Celer® FUMO	Fumonisin	Methanol-based assay for the detection of fumonisin in maize and feed.	96 192	HU0040012 HU0040052
Celer® OCHRA	Ochratoxin	Methanol-based assay for the detection of ochratoxin in cereals	96 192	HU0040013 HU0040063
Celer® T2	T-2 and HT-2 toxins	Methanol-based assay for the detection of both T-2 and HT-2 metabolite in cereals and feed	96 192	HU0040010 HU0040050

I'screen Quantitative ELISA Test Kits



Product	Target	Product description	No. of wells	Article No.
I'screen AFLA M1	Aflatoxin M1	Assay for detecting aflatoxins M1 in milk, yoghurt and cheese. LOD: Raw Milk 0.005 ppb, Milk Powder 0.05 ppb, Cheese 0.037, Firm cheese 0.12, Yoghurt 0.12	96 192	HU0040002 HU0040042
I'screen AFLA M1 milk - AOAC certified	Aflatoxin M1	Assay for detecting aflatoxins M1 in milk. LOD: Raw Milk 0.005 ppb, Milk Powder 0.05 ppb	96 192	HU0040001 HU0040041

Water-based Quantitative ELISA Test Kits



Product	Target	Product description	No. of wells	Article No.
H2AFLA	Aflatoxin	Solvent-free assay for the quantitative detection of total aflatoxins in maize, corn germ, wheat, rice, sorghum, barley, peanut, copra, pistachio, walnut, almond, soybean meal and feed.	96	HU0040055
H2DON	Deoxynivalenol	Solvent-free assay for the quantitative detection of total deoxynivalenol (vomitoxin) in cereals, corn, gluten meal, swine feed, DDGS, soybean meal, malted barley, wheat bran and middlings, and rye.	96	HU0040017

ABRAXIS® Patulin Test Kit



Product	Product description	Article No.
Patulin, ELISA, 96-test	Assay for the quantitative detection of patulin in contaminated samples. Test range: 7.0 to 300 ppb	500106
Patulin 1X6, ELISA, 96-test	As 500106, but this configuration allows for 6 separate runs	500110
Patulin Standard & Control Set	Additional product to Patulin ELISA	301102
Patulin Derivatization Set	Additional product to Patulin ELISA	301103

Immunoaffinity Columns



Product	Product description	Quantity	Article No.
SENSIPure Immunoaffinity Columns NEW!			
SENSIPure IAC Aflatoxins total	IAC with extended quality control for total aflatoxins	50 columns	IAAFT50
SENSIPure IAC Afla M1	<i>Coming soon!</i>		
SENSIColumn Immunoaffinity Columns			
SENSIColumn IAC Aflatoxin M1	Immunoaffinity columns that retain aflatoxin M1	3 ml x 50 columns	EFAFM3115
SENSIColumn IAC Ochratoxin	Clean-up of commodity extracts of food and feed samples containing ochratoxin A/B	3 ml x 50 columns	EFOT3125
SENSIColumn IAC Ochratoxin SMART	Specially designed low cost immunoaffinity column with reduces loding capacity for ochratoxin purification.	3 ml x 50 columns	EFOTS3125
SENSIColumn IAC Deoxynivalenol	Immunoaffinity columns that retain deoxynivalenol and separate it from the other substances present in the sample.	3 ml x 50 columns	EFD03135
SENSIColumn IAC Fumonisin	Immunoaffinity columns that retain fumonisins and separate them from the other substances present in the sample.	3 ml x 50 columns	EFFU3145
SENSIColumn IAC Zearalenone	Immunoaffinity columns that retain zearalenone and separate it from the other substances present in the sample.	3 ml x 50 columns	EFZE3155
SENSIColumn IAC Zearalenone SMART	Specially designed low cost immunoaffinity column with reduces loding capacity for ochratoxin purification.	3 ml x 50 columns	EFZES3155
SENSIColumn IAC T2/HT2	Immunoaffinity columns that retain T2 toxin and separate it from the other substances present in the sample.	3 ml x 50 columns	EFTE3165
SENSIColumn IAC Combi Afla+Ochra	Clean-up of commodity extracts of food and feed samples containing aflatoxins and ochratoxins	3 ml x 50 columns	EFCA3215
SENSIColumn IAC Combi Afla+Ochra+Zeara	Clean-up commodity extracts of food and feed samples containing aflatoxins, ochratoxins and zearalenon	3 ml x 50 columns	EFCZ3225
SENSIColumn IAC Combi Deoxinivalenol+Zearalenone	Clean-up of commodity extracts of food and feed samples containing deoxynivalenol and zearalenon	3 ml x 50 columns	EFCD3235
SENSIColumn IAC Combi AOZDFT all in one for LC-MS/MS	Simultaneous extraction of aflatoxins, ochratoxins, zearalenon, deoxynivalenol, fuminisins and T2-Toxin in food and feed stuffs	3 ml x 50 columns	EFCM3265
SENSIColumn IAC Ergot Alkaloids	Clean-up of commodity extracts of food and feed samples containing 12 priority ergot alkaloids	3 ml x 50 columns	EFLS3275

Supplementary Products



Product	No. of tests / Quantity	Article No.
Mycotoxin Extraction Solution A	500 ml	HU0040103
Milk diluent	12 ml	HU0040101
Extraction Buffers for Afla M1 in cheese samples	12 ml (Milk diluent) 20 ml (Extraction buffer)	HU0040102
Enzyme conjugate for Celer® AFLA B1 and B ZERO® AFLA B1	14 ml	HU0040104
Enzyme conjugate for Celer® DON v3 & B ZERO DON v2	14 ml	HU0040105
Enzyme conjugate for Celer® AFLA	14 ml	HU0040106
Enzyme conjugate for Celer® ZEA & B ZERO ZEA	14 ml	HU0040107
Enzyme conjugate for Celer® FUMO & B ZERO FUMO	14 ml	HU0040108
Enzyme conjugate for Celer® T2 & B ZERO T2	14 ml	HU0040109
Enzyme conjugate for Celer® OCHRA & B ZERO OCHRA	14 ml	HU0040110
Standard curve set for I'screen AFLA M1 milk	7 x 1,5 ml	HU0040111
Aflatoxin M1 supplementary standards for I'screen AFLA M1 and I'screen AFLA M1 milk	2 x 1,5 ml	HU0040112
Enzyme conjugate for Celer® AFLA HS	14 ml	HU0040099





GENETICALLY MODIFIED ORGANISMS (GMO)

Cultivation of genetically modified (GM) crops has increased significantly around the globe over the years. This increase in production has been combined with a complex and ever evolving global regulatory approval process for GM products, therefore requiring the testing of food and agricultural products for genetically modified content in order to facilitate international trade.

GMO analysis can be performed in the field or in a testing laboratory and determination of the appropriate test method is dependent on the nature of the sample, the required level of sensitivity of the assay, and the intended market for the product.

We offer a broad range of GMO testing products that cover both the rapid onsite / field testing as well as comprehensive molecular analysis.

GMO Testing with Real-time PCR

Our GMO testing portfolio is adapted to the volatile and current market situation and the global GMO planting and approval situation of GMOs. Real-time PCR kits for GMO testing are validated on various cyclers and are available for screening, identification and quantification.

Real-Time PCR Kits:

- **GMOScreen**: modular toolbox of simplex and multiplex assays for GMO screening
- **GMOIdent**: identification or exclusion of GMOs
- **GMOQuant**: quantitative to quantitate the GMO content



ELISA Kits and Lateral Flow Devices for GMO Detection

The ELISA test kits provide an accurate and reliable solution to verify the presence or the absence of inserted trait in individual leaf, seed or bulk grain.

Our lateral flow devices enable a rapid on-site GMO detection in cotton, corn, soybean and mustard / canola.



RapidScan ST5-W LFD Reader for GMO Testing

We offer a quick and easy-to-use protein-based testing method to identify genetically-modified raw ingredients like corn, soybean and canola before they are processed into a final product. The reader provides an easy on-site quantitative interpretation of the results in only 10 min.

SpeciesScreen & SpeciesIdent Kits



Qualitative real-time PCR kits for plant species screening and identification.

Kit	Product Description	IPC	Quantity	Cat No
SpeciesScreen RT Plant IPC (LR/HR)	Detection of general plant species DNA	+	96 rxns	5421229401
SpeciesIdent RT Soy IPC (LR)	Detection of soybean species DNA	+	96 rxns	5421232001
SpeciesIdent RT Corn/Maize IPC (LR)	Detection of corn/maize species DNA	+	96 rxns	5421229901
SpeciesIdent RT IPC (LR) Rapeseed	Detection of rapeseed/canola species DNA	+	96 rxns	5421234101
SpeciesIdent RT Cotton IPC (LR)	Detection of cotton species DNA	+	96 rxns	5421234001
SpeciesIdent RT IPC (LR) Rice	Detection of rice species DNA	+	96 rxns	5421234201
SpeciesIdent RT CaMV IPC (LR/HR)	Detection of Cauliflower Mosaic Virus (CaMV) species DNA	+	96 rxns	5421229701
SpeciesIdent RT Agrobacterium tumefaciens IPC (LR)	Detection of Agrobacterium tumefaciens species DNA	+	96 rxns	5421229801
SpeciesIdent RT IPC (LR) Linseed	Detection of linseed/flax species DNA	+	96 rxns	5421234401
SpeciesIdent RT IPC (LR) Tomato/Potato	Detection of tomato and potato species DNA	+	96 rxns	5421234301

GMOScreen Kits – Detection of Multiple Targets

Qualitative real-time PCR kits for GMO screening detecting multiple targets per tube. Please note that depending on the cyclor, either a low rox (LR) or no rox (NR) kit should be used.

Kit	Product Description	IPC	Quantity	Cat No
GMOScreen RT IPC 35S/NOS/FMV	Detection of the CaMV 35S promoter, nos terminator and FMV promoter	+	96 rxns	5421220301 (LR) 5421220302 (NR)
GMOScreen RT IPC 35S/NOS	Detection of the CaMV 35S promoter and nos terminator	+	96 rxns	5421220001 (LR)
GMOScreen RT IPC 35S/NOS/ABII	Detection of the CaMV 35S promoter, nos terminator and AgroBorder II element	+	96 rxns	5421227101 (LR) 5421227102 (NR)
GMOScreen RT IPC ABI/ABII	Detection of the AgroBorder I and AgroBorder II element	+	96 rxns	5421226201 (LR)

GMOScreen Kits – Detection of One Target

Qualitative real-time PCR kits for GMO screening detecting.

Kit	Product Description	IPC	Quantity	Cat No
GMOScreen RT IPC (LR) 35S Promoter	Detection of the CaMV 35S promoter	+	96 rxns	5421228501
GMOScreen RT IPC (LR) NOS	Detection of the nos terminator	+	96 rxns	5421220201
GMOScreen RT IPC (LR/HR) FMV	Detection of the FMV promoter	+	96 rxns	5421220501
GMOScreen RT IPC (LR) AgroBorder II	Detection of the AgroBorder II element	+	96 rxns	5421228401
GMOScreen RT IPC (LR) AgroBorder I	Detection of the AgroBorder I element	+	96 rxns	5421227501
GMOScreen RT IPC (LR) EPSPS modification	Detection of the combination of the genetic elements CTP2/EPSPS CP4 gene	+	96 rxns	5421228801

*IPC: internal positive control

Kit	Product Description	IPC	Quantity	Cat No
GMOScreen RT IPC (LR) bar	Detection of the bar gene	+	96 rxns	5421227601
GMOScreen RT IPC (LR) pat(syn)	Detection of the pat(syn) gene	+	96 rxns	5421227701
GMOScreen RT IPC (LR) ocs-terminator	Detection of the ocs terminator	+	96 rxns	5421228101
GMOScreen RT IPC (LR) cry1Ab/Ac	Detection of the cry1Ab/Ac gene	+	96 rxns	5421227901
GMOScreen 35S Terminator RT IPC (LR/HR)	Detection of the CaMV 35S terminator	+	96 rxns	5421227105
GMOScreen RT IPC (LR) nptII-gene	Detection of the nptII gene	+	96 rxns	5421228601
GMOScreen RT IPC (LR/HR+) 35S-NPT	Detection of the combination of the genetic elements 35S promoter/nptII gene	+	96 rxns	5421226901
GMOScreen RT IPC (LR/HR+) NOS-NPT	Detection of the combination of the genetic elements nos promoter/nptII gene	+	96 rxns	5421226801
GMOScreen RT IPC (LR) CsVMV	Detection of the combination of the genetic elements CsVMV promoter/pat(syn) gene	+	96 rxns	5421245101
GMOScreen RT IPC (LR) SAMS-ALS	Detection of the combination of the genetic elements SAMS promoter/als gene	+	96 rxns	5421226501



GMO Testing Kits for Corn/Maize

SMARTCheck GMO Corn

Use the following two qualitative multiplex assays for a broad coverage of GM corn events: GMOScreen RT 35S/NOS/ABII & GMOIdent RT IPC VCO-01981-5/DAS-40278-9/Ly038 Corn

Qualitative and Quantitative Assays – Detection of Multiple Targets

Qualitative and quantitative real-time PCR kits for GMO maize/corn detecting multiple targets per tube. Please note that depending on the cyclor, either a low rox (LR) or no rox (NR) kit should be used.

Kit	Qualitative Assay	IPC	Quantity	Quantitative Assay	IPC	Quantity
GMOIdent RT IPC VCO-01981-5/ DAS-40278-9/Ly038	5421230501 (LR) 5421230502 (NR)	+	96 rxns			
GMOIdent RT IPC 3272/BT176/MON863	5421243601 (LR) 5421243602 (NR)	+	96 rxns			
GMOIdent RT IPC TC1507/MON810/NK603	5421243101 (LR) 5421243102 (NR)	+	96 rxns			
GMOIdent RT IPC T25/DP-004114-3/DAS-59122-7	5421244801 (LR) 5421244802 (NR)	+	96 rxns			
GMOIdent RT IPC MIR162/MIR604/5307	5421245501 (LR) 5421245502 (NR)	+	96 rxns			
GMOIdent RT IPC MON87460/MON89034/MON88017	5421243701 (LR) 5421243702 (NR)	+	96 rxns			
GMOIdent RT IPC MON87411/MON87403/MON87427	5421244101 (LR) 5421244102 (NR)	+	96 rxns			
GMOScreen RT IPC Event GA21/PMI-NOS	5421227103 (LR)	+	96 rxns			
GMOQuant RT IPC 35S/NOS				5125223801 (LR)	+	2 x 48 rxns
GMOQuant RT IPC 35S/Event GA21				5125222801 (LR)	+	2 x 48 rxns
GMOQuant RT IPC MIR162/MIR604				5125222201 (LR)	+	2 x 48 rxns

*IPC: internal positive control

Qualitative and Quantitative Assays – Detection of One Target



Target/GMO (OECD Identifier)	Qualitative Assay	IPC	Quantity	Quantitative Assay	IPC	Quantity
CaMV 35S promoter	see GMOScreen			5125224001 (LR)	+	2 x 48 rxns
nos terminator	see GMOScreen			5125224101 (LR)	+	2 x 48 rxns
3272 (SYN-E3272-5)	5421243501 (LR)	+	96 rxns	5125207601 (LR)	-	2 x 48 rxns
5307 (SYN-Ø5307-1)	5421230801 (LR)	+	96 rxns	5125222401 (LR)	-	2 x 48 rxns
Bt11 (SYN-BTØ11-1)	5421225401 (LR/HR)	+	96 rxns	5125206501 (LR)	-	2 x 48 rxns
Bt176 (SYN-EV176-9)	5421240301	+	96 rxns	5125209401 (LR)	-	2 x 48 rxns
DAS-40278-9 (DAS-4Ø278-9)	5421226001 (LR)	+	96 rxns	5125222701 (LR)	+	2 x 48 rxns
DAS-59122-7 (DAS-59122-7)	5421245001 (LR)	+	96 rxns	5125208201 (LR)	-	2 x 48 rxns
DP-004114-3 (DP-ØØ4114-3)	5421242201 (LR/HR)	+	96 rxns	5125223701 (LR/HR)	+	2 x 48 rxns
DP-098140-6 (DP-Ø9814Ø-6)	5421246501 (LR)	+	96 rxns	5125221401	-	2 x 48 rxns
GA21 (MON-ØØØ21-9)	5421245401 (LR)	+	96 rxns	5125204601 (LR)	-	2 x 48 rxns
Ly038 (REN-ØØØ38-3)	5421241201 (LR)	+	96 rxns			
MIR162 (SYN-IR162-4)	5421245601 (LR)	+	96 rxns	5125209701 (LR)	-	2 x 48 rxns
MIR604 (SYN-IR6Ø4-5)	5421245701 (LR)	+	96 rxns	5125206401 (LR)	-	2 x 48 rxns
MON810 (MON-ØØ81Ø-6)	5421241301 (LR)	+	96 rxns	5125207801 (LR)	-	2 x 48 rxns
MON863 (MON-ØØ863-5)	5421243401 (LR)	+	96 rxns	5125208001 (LR)	-	2 x 48 rxns
MON87403 (MON-87403-1)	5421244301 (LR)	+	96 rxns			
MON87411 (MON-87411-9)	5421244201 (LR)	+	96 rxns			
MON87427 (MON-87427-7)	5421244401 (LR)	+	96 rxns	5125222501 (LR)	-	2 x 48 rxns
MON87460 (MON-8746Ø-4)	5421243901 (LR)	+	96 rxns	5125222901 (LR)	-	2 x 48 rxns
MON88017 (MON-88Ø17-3)	5421244001 (LR)	+	96 rxns	5125207301 (LR)	-	2 x 48 rxns
MON89034 (MON-89Ø34-3)	5421243801 (LR)	+	96 rxns	5125206701 (LR)	-	2 x 48 rxns
MZHGØJG (SYN-ØØØJG-2)	5421245301 (LR)	+	96 rxns			
NK603 (MON-ØØ6Ø3-6)	5421243201 (LR)	+	96 rxns	5125204401 (LR)	-	2 x 48 rxns
T14 (ACS-ZMØØ2-1)	5421230401 (LR)	+	96 rxns			
T25 (ACS-ZMØØ3-2)	5421244901 (LR)	+	96 rxns			
TC1507 (DAS-Ø15Ø7-1)	5421243301 (LR)	+	96 rxns	5125209301 (LR)	-	2 x 48 rxns
VCO-Ø1981-5 (VCO-Ø1981-5)	5421230201 (LR)	+	96 rxns			

*IPC: internal positive control



GMO Testing Kits for Soybean

SMARTCheck GMO Soy

Use the following two qualitative multiplex assays for a broad coverage of GM soybean events:GMOScreen RT 35S/NOS/ABII & GMOScreen RT IPC Soy CsVMV/CV127/event DP305423-1

Qualitative and Quantitative Assays – Detection of Multiple Targets

Qualitative and quantitative real-time PCR kits for GMO soy detecting multiple targets per tube. Please note that depending on the cyclers, either a low rox (LR) or no rox (NR) kit should be used.

Kit	Qualitative Assay	IPC	Quantity	Quantitative Assay	IPC	Quantity
GMOScreen RT IPC CsVMV/ event CV127/event DP-305423-1	5421227203 (LR) 5421227104 (NR)	+	96 rxns			
GMOIdent RT IPC DAS-44406-6 / DAS-81419-2 / DAS-68416-4	5421246001 (LR) 5421246002 (NR)	+	96 rxns			
GMOIdent RT IPC MON87708 / MON87701 / MON87705	5421244501 (LR) 5421244502 (NR)	+	96 rxns			
GMOScreen RT IPC CV127/ SAMS-ALS	5421225601 (LR)	+	96 rxns			
GMOQuant RT IPC 35S/ AgroBorder II				5125222301 (LR)	-	2 x 48 rxns
GMOQuant RT IPC 35S/ MON89788				5125210001 (LR)	-	2 x 48 rxns
GMOQuant RT IPC GTS 40-3-2 modification/Event MON89788				5125223901 (LR)	+	2 x 48 rxns

Qualitative and Quantitative Assays – Detection of One Target

Target/GMO (OECD Identifier)	Qualitative Assay	IPC	Quantity	Quantitative Assay	IPC	Quantity
CaMV 35S Promoter	see GMOScreen			5125207201 (LR)	-	2 x 48 rxns
AgroBorder II element	see GMOScreen			5125222001 (LR)	-	2 x 48 rxns
CsVMV Modification	see GMOScreen			5125225101 (LR)	+	2 x 48 rxns
A2704-12 (ACS-GMØØ5-3)	5421226101 (LR)	+	96 rxns	5125206801 (LR)	-	2 x 48 rxns
A5547-127 (ACS-GMØØ6-4)	5421223701 (LR/HR+)	-	96 rxns	5125220601	-	2 x 48 rxns
CV127 (BPS-CV127-9)	5421240501 (LR)	+	96 rxns	5125220701	-	2 x 48 rxns
DAS-44406-6 (DAS-444Ø6-6)	5421245801 (LR)	+	96 rxns			
DAS-68416-4 (DAS-68416-4)	5421240101 (LR)	+	96 rxns	5125223201 (LR)	+	2 x 48 rxns
DAS-81419-2 (DAS-81419-2)	5421245901 (LR)	+	96 rxns			
DP-305423-1 (DP-3Ø5423-1)	5421240601 (LR)	+	96 rxns	5125207501	-	2 x 48 rxns
DP-356043-5 (DP-356Ø43-5)	5421242301	+	96 rxns	5125220201	-	2 x 48 rxns
FG72 (MST-FGØ72-2)	5421240701 (LR)	+	96 rxns	5125224901 (LR)	+	2 x 48 rxns
MON87701 (MON-877Ø1-2)	5421241701 (LR)	+	96 rxns	5125220301	-	2 x 48 rxns
MON87705 (MON-877Ø5-6)	5421244701 (LR)	+	96 rxns	5125221601	-	2 x 48 rxns
MON87708 (MON-877Ø8-9)	5421240401 (LR)	+	96 rxns	5125223301 (LR)	+	2 x 48 rxns
MON87751 (MON-87751-7)	5421241801 (LR)	+	96 rxns	5125223501 (LR/HR)	+	2 x 48 rxns
MON87769 (MON-87769-7)	5421230701 (LR)	+	96 rxns	5125222601 (LR)	+	2 x 48 rxns
MON89788 (MON-89788-1)	5421241101 (LR)	+	96 rxns	5125224301 (LR)	+	2 x 48 rxns
GTS 40-3-2 (MON-Ø4Ø32-6)	5421242601 (LR/HR)	+	96 rxns	5125224201 (LR)	+	2 x 48 rxns
SYHTØH2 (SYN-ØØØH2-5)	5421246401 (LR)	+	96 rxns			

*IPC: internal positive control



GMO Testing Kits for Rapeseed/Canola

SMARTCheck GMO Canola

Use the following two qualitative multiplex assays for a broad coverage of GM canola events: GMOScreen RT IPC EPSPS/NOS/pat(syn) & GMOScreen RT IPC ocs-terminator/Laurical™/oxy-235 Canola

Qualitative and Quantitative Assays – Detection of Multiple Targets

Qualitative and quantitative real-time PCR kits for GMO rapeseed/canola detecting multiple targets per tube. Please note that depending on the cycler, either a low rox (LR) or no rox (NR) kit should be used.

Kit	Qualitative Assay	IPC	Quantity	Quantitative Assay	IPC	Quantity
GMOScreen RT IPC EPSPS/NOS/pat(syn)	5421228701 (LR) 5421228702 (NR)	+	96 rxns			
GMOScreen RT IPC ocs terminator/Laurical™/oxy-235	5421228201 (LR) 5421228301 (NR)	+	96 rxns			
GMOIdent RT IPC RT73/T45/MON88302	5421242701 (LR) 5421242702 (NR)	+	96 rxns			
GMOQuant RT IPC RT73/MON88302				5125224501 (LR)	+	2 x 48 rxns

Qualitative and Quantitative Assays – Detection of One Target

Target/GMO (OECD Identifier)	Qualitative Assay	IPC	Quantity	Quantitative Assay	IPC	Quantity
DP-073496-4 (DP-073496-4)	5421243001 (LR)	+	96 rxns			
23-18-17, 23-198 (CGN-89465-2, CGN-89111-8)	5421242401	+	96 rxns			
MON88302 (MON-88302-9)	5421242901 (LR)	+	96 rxns	5125224401 (LR)	+	2 x 48 rxns
MS8 (ACS-BN005-8)	5421224201	-	96 rxns	5125209001	-	2 x 48 rxns
oxy-235 (ACS-BN011-5)	5421242501	+	96 rxns			
RF3 (ACS-BN003-6)	5421224301	-	96 rxns	5125209101	-	2 x 48 rxns
RT73 (MON-00073-7)	5421242801 (LR)	+	96 rxns	5125224601 (LR)	+	2 x 48 rxns
T45 (ACS-BN008-2)	5421223501 (LR)	+	96 rxns	5125208401	-	2 x 48 rxns

*IPC: internal positive control



GMO Testing Kits for Cotton

Qualitative and Quantitative Assays – Detection of One Target

Please note that most of our qualitative kits and some quantitative kits include an Internal Positive Control (IPC).

Target/GMO (OECD Identifier)	Qualitative Assay	IPC	Quantity	Quantitative Assay	IPC	Quantity
281-24-236 (DAS-24236-5)	5421241501 (LR)	+	96 rxns	5125221101 (LR)	-	2 x 48 rxns
3006-210-23 (DAS-21023-5)	5421241601 (LR)	+	96 rxns	5125220901 (LR)	-	2 x 48 rxns
GHB614 (BCS-GH002-5)	5421241001 (LR)	+	96 rxns			
LLcotton25 (ACS-GH001-3)	5421224101 (LR/HR+)	-	96 rxns			
MON1445 (MON-01445-2)	5421222901	-	96 rxns			
MON15985 (MON-15985-7)	5421224001 (LR/HR+)	-	96 rxns			
MON88913 (MON-88913-8)	5421223401 (LR/HR+)	-	96 rxns			

GMO Testing Kits for Other Species

Qualitative Assays – Detection of One Target

Please note that most of our qualitative kits and some quantitative kits include an Internal Positive Control (IPC).

Target/GMO (OECD Identifier)	Species	Qualitative Assay	IPC	Quantity
FP967 (CDC-FL001-2)	Flax/Linseed	5421246301 (LR)	+	96 rxns
Bt63 (TT51-1, HZU-HH001-9)	Rice	5421246201 (LR)	+	96 rxns
LLRice62 (ACS-OS002-5)	Rice	5421222001	-	96 rxns
LLRice601 (BCS-OS003-7)	Rice	5421222101	-	96 rxns
H7-1 (KM-000H71-4)	Sugar Beet	5421246101 (LR)	+	96 rxns
EO-1a	Salmon	5421230601	+	96 rxns

*IPC: internal positive control



GMO ELISA Testing Kits

Qualitative ELISA Kits



Product name	Product Description	Nr of wells	Article No.
Cry1Ac/Ab ELISA Kit	Cotton/Corn/Soybean Individual Leaf, Seed	96	AID 007
Cry2A ELISA Kit	Cotton/Corn/Soybean Individual Leaf, Seed	96	AID 008
CP4EPSPS (RR) ELISA Kit	Cotton/Corn/Soybean/Canola Individual Leaf, Seed	96	AID 011
Cry1Ac/Cry2A Combined ELISA Kit	Cotton Individual Leaf, Seed	96	AID 017
PAT/bar ELISA Kit	Cotton/Corn/Canola/Soybean Individual Leaf, Seed	96	AID 018
Vip3A ELISA Kit	Cotton/Corn Individual Leaf, Seed	96	AID 023
PAT/pat ELISA Kit	Cotton/Corn/Canola/Soybean Individual Leaf, Seed	96	AID 027
Cry1F ELISA Kit	Cotton/Corn Individual Leaf, Seed	96	AID 004
Modified Cry3A ELISA Kit	Corn Individual Leaf, Seed	96	AID 052
Cry3Bb ELISA Kit	Corn Individual Leaf, Seed	96	AID 053
Chinese Fusion ELISA Kit	Cotton Individual Leaf, Seed	96	AID 006
Cry1F Quantitative ELISA Kit	Cotton/Corn Individual Leaf, Seed	96	AID 101F
PAT/bar Quantitative ELISA Kit	Mustard Individual Leaf, Seed	96	AID 102F
Cry1EC ELISA Kit	Cotton/Castor Individual Leaf, Seed	96	AID 020
Barnase ELISA Kit	Pollen from Canola/Mustard	96	AID 019
Barstar ELISA Kit	Pollen from Canola/Mustard	96	AID 016
Buffalo Milk Identification Elisa Kit	Quick 15-minute ELISA test which can detect up to 5% adulteration of buffalo milk in cow milk, goat or sheep milk. The test can be done on fresh or frozen raw milk only. (Sensitivity: 5% of buffalo milk)	96	AID 063
Cow Milk Identification Elisa Kit	Quick 15-minute ELISA test which can detect up to 5% adulteration of cow milk in buffalo milk, goat or sheep milk. The test can be done on fresh or frozen raw milk only. (Sensitivity: 5% of cow milk)	96	AID 064

GMO Lateral Flow Devices

Qualitative Bulk Grain Lateral Flow Kits



Product name	Product Description	Nr of strips	Article No.
CP4EPSPS (RR) LFS Kit	Soybean/Canola Bulk Seeds (0.1%)	100	AID 040
CP4EPSPS (RR) LFS Kit	Cotton/Corn Bulk Seeds (0.1%)	100	AID 043
Cry1Ac/Ab LFS Kit	Cotton/Corn Bulk Seeds (Sensitivity: 0.25% for Cotton & 0.8% for Corn)	100	AID 044
Cry2A LFS Kit	Cotton/Corn Bulk Seeds (Sensitivity: 0.25% for Cotton & 1% for Corn)	100	AID 046
Vip3A LFS Kit	Corn Bulk Seeds (0.25%)	100	AID 048
Cry1F LFS Kit	Corn Bulk Seeds (0.5%)	100	AID 050
Cry3Bb/eCry3.1Ab LFS Kit	Corn Bulk Seeds (0.5%)	100	AID 058
Cry3Bb LFS Kit	Corn Bulk Grain (0.2%)	100	AID 060

Qualitative Individual Leaf/Seed Lateral Flow Kits



Product name	Product Description	Nr of strips	Article No.
Cry1Ac/Ab LFS Kit	Cotton/Corn Individual Leaf, Seed	100	AID 032
Cry1F LFS Kit	Cotton/Corn Individual Leaf, Seed	100	AID 033
Cry2A LFS Kit	Cotton/Corn Individual Leaf, Seed	100	AID 026
Vip3A LFS Kit	Cotton/Corn Individual Leaf, Seed	100	AID 031

Product name	Product Description	Nr of strips	Article No.
CP4EPSPS (RR) LFS Kit	Cotton/Corn/Soybean/Canola Individual Leaf, Seed	100	AID 025
PAT/Pat LFS Kit	Corn/Soybean Individual Leaf, Seed	100	AID 029
Cry1Ac/Cry2A LFS Kit	Cotton Individual Leaf, Seed	100	AID 038
Cry1Ab/CP4EPSPS (RR) LFS Kit	Corn Individual Leaf, Seed	100	AID 036
Cry1Ac/Cry2A/CP4EPSPS (RR) LFS Kit	Cotton Individual Leaf, Seed	100	AID 035
CP4 EPSPS/Vip3A LFS Kit	Cotton Individual Leaf, Seed	100	AID 037
PAT/bar LFS Kit	Canola Individual Leaf, Seed	100	AID 049
Modified Cry3A LFS Kit	Corn Individual Leaf, Seed	100	AID 057
Cry3Bb LFS Kit	Corn Individual Leaf, Seed	100	AID 054
Micro Pestles	Micro Pestles for Tissue Homogenizer for LFS Kit	100 Pestles	AID MP01

Additional GMO ELISA Kits and Proteins

Product	Product Format	Quantity	Article No.
ABRAXIS® CP4 EPSPS*	ELISA Plate	96 tests	510101
Cry1Ab	Protein	10 µg	300003
Cry1Ac	Protein	10 µg	250020
Cry2A	Protein	10 µg	250040
Cry3B	Protein	10 µg	250050
Cry9C	Protein	10 µg	250060

* Minimum order quantity: 5 kits

Quantitative Bulk Grain Lateral Flow Kits

GMO Lateral Flow Strips for RapidScan ST5-W Lateral Flow Reader

Product name	Product description	Article No.
CP4 EPSPS (RR) Quantitative LFS Kit – Soybean & Canola	LFS for CP4EPSPS Testing in Bulk Grain Soybean & Canola using RapidScan (Sensitivity: 0.05% for Soybean & 0.1% for Canola), 100 strips	EAID 101
CP4 EPSPS (RR) Quantitative LFS Kit – Corn	LFS for CP4EPSPS Testing in Bulk Grain Corn using RapidScan (Sensitivity: 0.1% for Corn), 100 strips	EAID 102
Vip3A Quantitative LFS Kit – Corn	LFS for Vip3A Testing in Bulk Grain Corn using RapidScan (Sensitivity: 0.2% for Corn), 100 strips	EAID 103
Cry3Bb Quantitative LFS Kit – Corn	LFS for Cry3Bb Testing in Bulk Grain Corn using RapidScan (Sensitivity: 0.5% for Corn), 100 strips	EAID 104

RapidScan ST5-W Lateral Flow Assay Reader

Product name	Product description	Article No.
RapidScan ST5-W Lateral Flow Assay Reader	Portable instrument specifically designed for field and in-process testing applications requiring qualitative to semi-quantitative test results. Compatible with Gold Standard Diagnostics' GMO, allergen, glyphosate and algal toxins lateral flow tests.	LFRSCAN002
LFD Reader Adapter for GMO strips	Adapter for GMO LFDs, for use with RapidScan ST5-W LFD Reader	LFA0060001



NUCLEIC ACID ISOLATION

Food, feed and seed laboratories are often faced with a number of challenges during the isolation of DNA. The high variability of samples types as well as inhibitory substance and low DNA yield can have detrimental impacts on the subsequent analytical methods, such as PCR testing. High-quality DNA is the prerequisite for the success of these methods, therefore it is crucial to select the right DNA method optimised for your sample type. Our kit portfolio offers DNA methods for a wide range of sample types.

Automated DNA Isolation With iMAGo Food

Meeting the needs of a high-throughput laboratory, iMAGo Food offers an automated, magnetic-bead based technology to efficiently isolate genomic DNA from a high variety of food and feed sample matrices.

Key Benefits

- Recovery up to 180 µg of DNA when using raw matrices such as corn kernels (DNA yield strongly depends on matrix type and grinding performance)
- For use on open platforms such as KingFisher Flex System and Allsheng Auto-Pure 96
- Highest matrix variability being validated with one workflow
- Fully validated workflow with subsequent GMO Real-Time PCR systems
- Based on solvent-free chemistry

DNA Isolation Offering



Product name	Product description	Quantity	Article No.
iMAGo Food	Test kit for automated, magnetic-bead based isolation of high-quality DNA from food and feed samples. Designed for use on open automated platforms like KingFisher™ Flex System and Allsheng Auto-Pure 96.	96	5524421001
GENESpin	Silica-based spin-columns for the isolation of genomic DNA for food and feed samples. All items/reagents included.	50	5224400605
DNA Cleaning Columns	Spin-columns for additional DNA purification step. All items/reagents included.	100	5224700310

Note: if larger packaging formats are requested, please refer to your local sales support



VETERINARY DRUG RESIDUES AND ADDITIVES

Veterinary drugs are usually administered within animal husbandry to cure and to prevent diseases, to increase weight gain and to tranquilize animals during transportation. These drugs consist of a complex group of hundreds of substances belonging to different chemical classes and therapeutic areas i.e., antibiotics, antiparasitics, nonsteroidal anti-inflammatory drugs, growth promoters such as steroid hormones and betaagonists, and many others.

The widespread use of veterinary drugs in livestock is of great concern as their presence in edible products could induce severe consequences on human health: i.e., hepato- and nefro-toxicity, side effects, allergic reactions, sterility, cancer, and last but not the least, drug contaminated food can favor anti-microbial resistance.

ELISA Kits to Detect Veterinary Drug Residues and Feed Additives

We provide broad support for the needs of the meat, dairy, aquaculture, animal husbandry, veterinary, and other industries. Products include ELISA for quantitative analysis and lateral flow tests for rapid analysis of substances in matrices such as meat, egg, milk, honey, fish, crustaceans, molluscs, and animal feed.

Analytes include:

Antimicrobials

- Sulfonamides *
- Tetracyclines
- Quinolones *
- Streptomycin
- Tylosin
- Chloramphenicol
- Nitrofurans metabolites (AOZ, AMOZ, SEM, AHD)

- Penicillin
- Ivermectin
- ABRAXIS® Salinomycin
- ABRAXIS® Monensin

Beta-agonists

- Clenbuterol

Steroids and RALs

- Zeranol
- Trenbolone

Others

- Corticosteroids *

(*) Broad range kit: this kit can recognize a wide number of drugs belonging to the same substance

Key Benefits of the VDR ELISA Kits

- *I'screen*: ELISA test kits for the detection of low levels of drug residues as well as the presence of a number of structure-related contaminants
- Rapid assays are available with 45 min incubation time (only the kits for detecting nitrofurans metabolites)

I'screen Quantitative ELISA Test Kits



Product	Target	Product description	No. of tests / Quantity	Article No.
I'screen SULFA	Sulfonamides family	Sensitive broad-range assay for the quantitative analysis of all the principal sulfonamides used in zootechniques.	96	HU0050003
I'screen STREPTO	Streptomycin	Sensitive assay for the quantitative detection of streptomycin and dihydrostreptomycin	96	HU0050013
Milk Standard for I'screen Strepto		1.5ml of Milk Standard	1.5 ml	HU0050019
I'screen TYLOSIN	Tylosin	Sensitive assay for the quantitative analysis of tylosin A	96	HU0050020
I'screen CAP	Chloramphenicol	Sensitive assay for the quantitative detection of chloramphenicol in different matrices	96	HU0050001
I'screen CAP v2	Chloramphenicol	Sensitive assay for the quantitative detection of chloramphenicol in seafood and other matrices	96	HU0050002
I'screen QUINO	Fluoroquinolones	Sensitive broad-range assay for the quantitative research of all the regulated fluoroquinolones used in zootechniques.	96	HU0050004
I'screen TRENB		Sensitive assay for the quantitative detection of trenbolone	96	HU0050022
I'screen ZERANOL	Zeranol	Sensitive assay for the quantitative detection of zeranol	96	HU0050023
I'screen CORTICO	Corticosteroids	Broad-range assay for the research of corticosteroids	96	HU0050007
β-agonists (clenbuterol) ELISA kit	Clenbuterol	Sensitive assay for the quantitative detection of clenbuterol	96	HU0050018

I'screen Rapid ELISA Test Kits



Product	Target	Product description	No. of tests / Quantity	Article No.
I'screen AOZ Rapid	AOZ	Test kit for the rapid quantitative detection of furazolidone metabolite in seafood, bovine and swine muscle, eggs and honey.	96	HU0050034
I'screen AMOZ Rapid	AMOZ	Test kit for the rapid quantitative detection of furaltadone metabolite in seafood, bovine and swine muscle, eggs and honey.	96	HU0050035
I'screen SEM Rapid	SEM	Test kit for the rapid quantitative detection of nitrofurazone metabolite in seafood, bovine and swine muscle and honey.	96	HU0050036
I'screen AHD Rapid	AHD	Test kit for the rapid quantitative detection of nitrofurantoin metabolite in seafood, bovine and swine muscle and honey.	96	HU0050037

Other Kits to Detect Veterinary Drug Residues and Additives



Product	Product Format	Quantity	Article No.
SENSISpec Tetracycline	Plate	96 tests	HU0050014
SENSISpec Penicillin	Plate	96 tests	HU0050017
ABRAXIS® Enrofloxacin, ELISA, 96-test*	Plate	96 tests	522511
Ivermectin/Abamectin, ELISA, 96-test*	Plate	96 tests	5142B
ABRAXIS® Melamine, ELISA, 96-test	Plate	96 tests	50005B
ABRAXIS® Monensin, ELISA, 96-test*	Plate	96 tests	515785
ABRAXIS® Progesterone, Bovine Pregnancy (Milk/Serum/Plasma), ELISA, 96-test	Plate	96 tests	5081M
ABRAXIS® Salinomycin/Narasin, ELISA, 96-test	Plate	96 tests	515795
ABRAXIS® Sulfamethoxazole (SMX), ELISA, 96-test*	Plate	96 tests	522003

* Minimum order quantity: 5 kits

BIOGENIC AMINE

Histamine is a biogenic amine, which is formed by enzymatical decarboxylation from the amino acid histidine. It can enter the human body via nutrition and can thus cause pseudo-allergic food intolerances.

Food intolerances, which are caused by increased histamine concentrations, are clinically characterized by rash, diarrhoea, vomiting, nausea, itching, headache and asthma. The extent of the reaction is dependent on the ingested amount of histamine.

Separated from histamine intolerances toxic reactions exist, which are caused by very high histamine concentrations. Toxic histamine concentrations, which can cause the so-called scombroid reaction, appear after bacterial degradation of protein-rich food, especially fish.

Histamine is found above all in cheese, fish, spinach, smoked products and red wine. Our kits provide a quick, economical and sensitive method to detect histamine in wine, fish or cheese.

Histamine Kits



Product	Product Format	Quantity	Article No.
ABRAXIS® Histamine, ELISA, 96-test*	Plate	96 tests	515168
SENSISpec ELISA Histamine	Plate	96 tests	HU0030200
SENSISpec ELISA Histamine Rapid	Plate	96 tests	HU0030201

* Minimum order quantity: 5 kits





ANIMAL SPECIES

Animal species identification in food and feed products has grown in importance due to public health, economic and legal concerns. Even religious and ethical criteria can be at risk in the case of food adulteration. To verify the authenticity of products, food testing laboratories need reliable methods, which can answer these questions.

The application of specific methods can determine if lower-priced substitutes replace premium products such as chicken instead of turkey or cow milk instead of goat milk. Confidence that vegetarian or vegan food contains no trace of animal products is essential to brand integrity. We also offer DNA isolation and purification solutions for a wide range of matrices, including highly processed matrices such as pure gelatine"

DNAnimal Kits

The DNAnimal product line offers a broad spectrum of sensitive real-time PCR kits for the most domestic animal species as well as specific applications like halal testing.

Most DNAnimal kits detect the species or taxonomic group in question with a sensitivity of 0.01%. Some specific kits (e.g. the DNAnimal Ident Pig HS) detecting mitochondrial targets are even more sensitive.

DNAnimal Screen

- Kits cover different taxonomic groups
- Application for various food and feed relevant testing strategies, i.e. to test vegan or vegetarian food

DNAnimal Ident

- For identifying or excluding individual animal species

Key Benefits

- Multiplex kits targeting in total 12 animal species to increase efficiency in the laboratory
- Kits are validated on a number of different thermocyclers
- Contain an IPC (internal positive control) to exclude false-negative results
- Have undergone extensive specificity and sensitivity validation
- Produce robust and reliable results
- DNA extraction kits available for different matrices

DNAAnimal Kits – Detection of Multiple Targets



Kit	Product Description	IPC	Quantity	Cat No
DNAAnimal Screen Halal IPC (LR)	Detection of pork and horse & donkey species DNA	+	96 rxns	5422221210
DNAAnimal Mplex Horse&Donkey/ Cattle/Chicken	Detection of horse & donkey, cattle and chicken DNA	+	96 rxns	HU0070004
DNAAnimal Mplex Goat/Pig/Bison	Detection of goat, pig and bison DNA	+	96 rxns	HU0070003
DNAAnimal Mplex Water buffalo/ Turkey/Sheep	Detection of water buffalo, turkey and sheep DNA	+	96 rxns	HU0070002
DNAAnimal Mplex Rabbit/ Muscovy Duck/Mallard Duck	Detection of rabbit, muscovy duck and mallard duck DNA	+	96 rxns	HU0070001

DNAAnimal Screen Kits – Detection of One Target

Kit	Product Description	IPC	Quantity	Cat No
DNAAnimal Screen Mammal & Bird IPC	Detection of mammalian and avian DNA	+	96 rxns	5422212110
DNAAnimal Screen Ruminant IPC	Detection of ruminant DNA	+	96 rxns	5422221110
DNAAnimal Screen Fish IPC	Detection of fish DNA	+	96 rxns	5422211310
DNAAnimal Screen Bird IPC	Detection of avian DNA	+	96 rxns	5422211410

DNAAnimal Ident Kits – Detection of One Target

Kit	Product Description	IPC	Quantity	Cat No
DNAAnimal Ident Beef IPC	Detection of bovine DNA (<i>Bos taurus</i> , bison and other bos species)	+	96 rxns	5422220610
DNAAnimal Ident Pork IPC	Detection of porcine DNA (both, <i>Sus scrofa domestica</i> and <i>scrofa</i>)	+	96 rxns	5422211910
DNAAnimal Ident Pig HS IPC (LR)	Detection of porcine DNA (both, <i>Sus scrofa domestica</i> and <i>scrofa</i>) for low DNA samples (e.g. gelatin)	+	96 rxns	5422211810
DNAAnimal Ident Chicken IPC (LR)	Detection of chicken (<i>Gallus gallus</i>) DNA	+	96 rxns	5422221010
DNAAnimal Ident Duck IPC	Detection of duck (<i>Anas platyrhynchos</i> and <i>Cairina moschata</i>) DNA	+	96 rxns	5422220410
DNAAnimal Ident Goose IPC	Detection of goose DNA	+	96 rxns	5422220810
DNAAnimal Ident Turkey IPC	Detection of turkey DNA	+	96 rxns	5422211510
DNAAnimal Ident Goat IPC	Detection of goat DNA	+	96 rxns	5422211610
DNAAnimal Ident Sheep IPC	Detection of sheep DNA	+	96 rxns	5422211710
DNAAnimal Ident Horse IPC (LR)	Detection of horse DNA	+	96 rxns	5422220110
DNAAnimal Ident Water Buffalo IPC (LR)	Detection of water buffalo DNA	+	96 rxns	5422220910
DNAAnimal Ident Donkey (LR)	Detection of donkey DNA	-	96 rxns	5422220210





ENVIRONMENT AND WATER

Water is critical for life itself, making it arguably the most valuable resource on the planet. As a result, water is the object of numerous environmental laws and regulations throughout the world. These regulations address not only drinking water but the entire water cycle including surface and ground water, recreational, process and waste water.

Due to the diversity of water testing applications, flexibility is important and can provide distinct advantages to users in meeting specific testing objectives. Traditional analytical laboratory testing can often be costly and time consuming. Our commercially available test kits allow for accurate, on-site testing, providing near real time answers for critical decision-making, often at a lower cost than traditional methods.

ABRAXIS® Environment and Water Kits

We provide innovative, near real time, field and lab based testing solutions for water and environmental samples.

Algal Toxins

Our algal toxin products are available in multiple formats and applications to meet the diverse testing objectives of our customers. Test kits include quantitative ELISA plate kits as well as semi-quantitative/qualitative lateral flow kits. We hold the exclusive world-wide license for the ADDA-specific microcystins antibody, making us the sole commercial manufacturer of Microcystins ADDA test kits as specified in EPA Method 546. We also offer testing solutions for Cylindrospermopsin, Saxitoxins, Anatoxin-a, Brevetoxin, Anabaenopeptins, Okadaic acid, Domoic acid and BMAA in various sample matrices.

Pesticides (including Glyphosate):

We offer the only commercially available AOAC approved Glyphosate ELISA kit for Durum Wheat, Whole Oats, Groats, Yellow Peas and Red Lentils. We also offer quantitative and qualitative detection of glyphosate using ELISA and lateral flow dipstick in other matrices including water, honey, coffee, grains, legumes and oats. Other pesticide kits include 2,4-D, Atrazine, DDE/DDT, Diuron, Fluridone, Imidacloprid, Metolachlor, Organophosphates/Carbamates, Pyrethroids and Trifluralin.

Industrial Chemicals / Hydrocarbons

One of our core strengths is developing sensitive and specific antibodies against small molecules. We provide test kits for a variety of environmental contaminants.

Markers for Bioactivity

Certain compounds found in consumer products can be used as markers of human bioactivity. We offer quantitative assays to measure these biomarkers in environmental samples.

Surfactants

Generally surfactants consist of both an alkyl chain hydrophobic group as well as a functional hydrophilic group. This amphiphilic structure helps to lower surface tension between phases, making surfactants ideal for use as detergents, wetting agents, emulsifiers, foaming agents, or dispersants with a wide range of industrial and consumer use. We offer quantitative ELISA test kits for surfactants to monitor their presence in environmental samples.

Equipment

We offer a variety of readers and associated equipment that are compatible with our rapid test kits including ELISA plate, tube and test strip readers. Our equipment offering supports both field and lab-based testing as well as applications ranging from qualitative to quantitative to meet your specific testing needs.

Key Benefits

- 20+ years of collaboration with key government agencies to meet and exceed the needs of researchers and industry
- Unmatched expertise in rapid water and environmental testing
- Multiple technologies, formats and applications to meet customer-specific objectives

Algal Toxins ELISA Plate & Tube Test Kits



Product	Product format	Quantity	Article No.
ABRAXIS® Anabaenopeptins	ELISA Plate	96 tests	520070
ABRAXIS® Anatoxin-a (VFDF)	ELISA Plate	96 tests	520060
ABRAXIS® BMAA	ELISA Plate	96 tests	520040
ABRAXIS® Brevetoxin (NSP)	ELISA Plate	96 tests	520034
ABRAXIS® Cylindrospermopsin	ELISA Plate	96 tests	522011
ABRAXIS® Domoic Acid (ASP) (Onsite Technologies)	ELISA Plate	96 tests	ON0021
ABRAXIS® Microcystins	ELISA Tube	40 tests	520012A
ABRAXIS® Microcystins/Nodularins (ADDA) (EPA ETV) (EPA Method 546)	ELISA Plate	96 tests	520011
ABRAXIS® Microcystins/Nodularins (ADDA) OH (EPA ETV)	ELISA Plate	96 tests	520011OH
ABRAXIS® Microcystins/Nodularins (ADDA) SAES	ELISA Plate	96 tests	520011SAES
ABRAXIS® Microcystins/Nodularins DM (EPA ETV) (CCL4)	ELISA Plate	96 tests	522015
Microcystins/Nodularins PP2A (EPA ETV)	ELISA Plate	96 tests	520032
ABRAXIS® Okadaic Acid (DSP)	ELISA Plate	96 tests	520021
Okadaic Acid (DSP), PP2A	ELISA Plate	96 tests	520025
ABRAXIS® Saxitoxins (PSP)	ELISA Plate	96 tests	52255B
ABRAXIS® Saxitoxins (PSP) Shipboard (ISSC 09-107)	ELISA Plate	96 tests	52255SB

ABRAXIS® Algal Toxins Dipstick Test Kits



Product	Product format	Quantity	Article No.
Anatoxin-a (VFDF)	Dipstick	5 tests 20 tests	520042 520043
Cylindrospermopsin with QuikLyse™ Feature	Dipstick	5 tests 20 tests	520029 520030
Microcystins with QuikLyse™ Feature, Source Drinking Water	Dipstick	5 tests 20 tests	520019 520020
Microcystins with QuikLyse™ Feature, Recreational Water	Dipstick	5 tests 20 tests	520023 520022
Microcystins, Finished Drinking Water, 0.5 - 5 ppb	Dipstick	5 tests 20 tests	520016 520017
Microcystins, Finished Drinking Water, 0.3 - 3 ppb	Dipstick	20 tests	520046

ABRAXIS® Algal Toxins Standards



Product	Product format	Quantity	Article No.
Homo-anatoxin-a	Standard	4 µg/mL, 0.5 ml	301295
Anatoxin-a (+), Certified	Standard	~5 µg/ml, 0.5 ml	300586
Anatoxin-a (+)	Standard	10 µg/ml, 0.5 ml	300620
Dihydroanatoxin-a	Standard	10 µg/ml, 0.5 ml	300655
13 C4-(+)-Anatoxin-a	Standard	10 µg/ml, 0.5 ml	300505
BMAA D3	Standard	1.0 mg	300622
Cylindrospermopsin	Standard	0.5 mg	300624
Cylindrospermopsin, Certified	Standard	~10 µg/ml, 0.5 ml	300588
Cylindrospermopsin	Standard	10 µg/ml, 1 ml	300626
7-epi-Cylindrospermopsin, supplied dry	Standard	5 µg	300651
7-deoxy-Cylindrospermopsin, supplied dry	Standard	5 µg	300653
[15N5] Cylindrospermopsin	Standard	10 µg/ml, 0.5 ml	300504
[15N5] 7-deoxy-Cylindrospermopsin, dry	Standard	5 µg	300508

Product	Product format	Quantity	Article No.
[15N5] 7-epi-Cylindrospermopsin, dry	Standard	5 µg	300506
Desmethyl Microcystin LR	Standard	10 µg/ml, 1ml	300656
Microcystin HiIR	Standard	10 µg/ml, 1ml	300654
Microcystin LA	Standard	10 µg/ml, 1ml	300628
Microcystin LF, Deuterated	Standard	10 µg/ml, 0.5ml	300500
Microcystin LF	Standard	10 µg/ml, 1ml	300646
Microcystin LR	Standard	0.5 mg	300630
Microcystin LR	Standard	10 µg/ml, 1ml	300632
Microcystin LR Deuterated (D7)	Standard	10 µg/ml, 0.5ml	300502
Microcystin LR Ethylated (D5, 99%)	Standard	25 µg	300507
Microcystin LR, Certified	Standard	10 µg/ml, 0.5 ml	300639
Microcystin LW	Standard	10 µg/ml, 1 ml	300650
Microcystin LY	Standard	10 µg/ml, 1 ml	300634
Microcystin RR	Standard	10 µg/ml, 1 ml	300636
Microcystin RR, Certified	Standard	10 µg/ml, 0.5 ml	300582
Microcystin WR	Standard	10 µg/ml, 1 ml	300652
Microcystin YR	Standard	10 µg/ml, 1 ml	300638
Nodularins	Standard	10 µg/ml, 1 ml	300640
Nodularins, Certified	Standard	10 µg/ml, 0.5 ml	300591
Saxitoxins	Standard	10 µg/ml, 1 ml	300642
Saxitoxins, Certified	Standard	20 µg/ml, 0.5 ml	300590
[15N7] Saxitoxin	Standard	5 µg	300956
Saxitoxins (PSP) (EC 2002/225 Compliant) Seawater Standards Set	Standard	Set	52255SW

ABRAXIS® Algal Toxins QC Materials

Product	Product format	Quantity	Article No.
Microcystins/Nodularins (ADDA) Accessory Pack for Method 546 (for QC)	Accessory Pack	1 pack	520013
Microcystins LR Check Samples (0, 2 and 20 ppb)	Check Samples	1 set	422011
Microcystins/Nodularins (ADDA) Spiking Solution, MCT-LR	Spiking Solution	50µg/L, 10 ml	300702
Cylindrospermopsin MDL Study Solution	MDL Study Solution	1 ml x 3 vials	300705
Cylindrospermopsin MDL Study Solution (for CAAS/CAAS Cube)	MDL Study Solution	10 ml x 1 vial	300705C
Microcystins MDL Study Solution	MDL Study Solution	1 ml x 3 vials	300700
Microcystins MDL Study Solution (for CAAS/CAAS Cube)	MDL Study Solution	10 ml x 1 vial	300700C
Saxitoxins (PSP) MDL Study Solution	MDL Study Solution	1 ml x 3 vials	300710
Saxitoxins (PSP) MDL Study Solution (for CAAS/CAAS Cube)	MDL Study Solution	10 ml x 1 vial	300710C

ABRAXIS® Algal Toxins Related Products

Product	Product format	Quantity	Article No.
QuikLyse™, Rapid Lysing and Filtration Kit	Accessory Pack	45 tests	529911
Anatoxin-a/Saxitoxins, Sample Diluent (10X solution)	Reagent	25 ml 1 L	530010 53001L
Brevetoxin (NSP) Sample Diluent	Reagent	30 ml	520027
Brevetoxin (NSP) Seawater Sample Pretreatment Solution	Reagent	25 ml	520028
Cylindrospermopsin, Seawater Sample Treatment Solution	Reagent	45 tests	529914
Microcystins/Nodularins (ADDA) (EPA ETV) Seawater Clean Up Kit	Reagent	45 tests	529912
Microcystins/Nodularins DM Seawater Sample Treatment Solution	Reagent	45 tests	529913

Industrial Chemicals / Hydrocarbons

Product	Product format	Quantity	Article No.
Alkylphenols (AP)*, **	ELISA plate	96 tests	590012
Alkylphenol Ethoxylate (APE)*, **	ELISA Plate	96 tests	520041
ABRAXIS® Dioxins/Furans (TCDD)*	ELISA plate	96 tests	530037
ABRAXIS® Coplanar PCBs*	ELISA plate	96 tests	530011
Linear Alkylbenzene Sulfonate (LAS)*, **	ELISA Plate	96 tests	520031
ABRAXIS® PCBs Higher Chlorinated*	ELISA plate	96 tests	530041
ABRAXIS® Phthalates*	ELISA plate	96 tests	530050
Bisphenol A (BPA)*, **	ELISA Plate	96 tests	590023
ABRAXIS® Triclosan*	ELISA plate	96 tests	530114

*Minimum order quantity: 5 kits

**Not for sale in the EU

ABRAXIS® Industrial Chemicals / Hydrocarbons Related Products

Product	Product Format	Quantity	Article No.
PCBs Higher Chlorinated (1254, 1260, 1248, 1242, 1262, 1232, 1268, 1016, or 1221)	Calibrator Sets		530003
Soil Extraction Kit	Sample Prep Kit	12 tests	530006

ABRAXIS® Markers for Bioactivity

Product	Product format	Quantity	Article No.
Caffeine	ELISA plate	96 tests	515575
Carbamazepine*	ELISA plate	96 tests	515585

*Minimum order quantity: 5 kits

ELISA Plate, Tube & Test Strip Readers & Equipment

Product	Product format	Article No.
AbraScan® Dipstick Reader III, Handheld reader	Reader	475025B
RapidScan ST5-W Lateral Flow Reader	Reader	475035 (US orders)
RapidScan ST5-W Reader Adapter for Pesticides (Glyphosate)	Adapter	475032 (US orders)
RapidScan ST5-W Reader Adapter for Allergens	Adapter	475033 (US orders)
RapidScan ST5-W Reader Adapter for GMO	Adapter	475037 (US orders)
Microplate Reader, Model 4303 (full plates, full & partial well strips)	Reader	475010
Microplate Reader, Model 4700 with Printer (up to 3 full & partial well strips)	Reader	475007
Photometer M6+ Reader (combo single microwell/tube)	Reader	475101

ABRAXIS® Pesticides

Product	Product format	Quantity	Article No.
2,4-D*	ELISA plate	96 tests	54003A
2,4-D*	Tube	40 tests	54004B
Atrazine	Magnetic Particle	100 tests	500001
Atrazine	ELISA Plate	96 tests	520005
DDE/DDT*	ELISA Plate	96 tests	540041
Diuron*	ELISA Plate	96 tests	520001
Fluridone*	Magnetic Particle	100 tests	500511
Imidacloprid/Clothianidin	ELISA Plate	96 tests	500800
Metolachlor*	Magnetic Particle	100 tests	500061
Metolachlor*	ELISA Plate	96 tests	500065
Organophosphate/Carbamate (OP/C)*	Tube	20 tests	550051
Organophosphate/Carbamate (OP/C)	Plate	96 tests	550055
Pyrethroids*	ELISA Plate	96 tests	500204
Spinosyn*	ELISA tube	40 tests	50020B
Trifluralin	ELISA Plate	96 tests	500601

*Minimum order quantity: 5 kits

ABRAXIS® Pesticides: Glyphosate

Product	Product format	Quantity	Article No.
Glyphosate	Magnetic Particle	120 tests	500081
Glyphosate*	ELISA plate & derivatization kit	96 tests	500205
Glyphosate ELISA AOAC Test Kit for Durum Wheat, Whole Oats, Groats, Yellow Peas & Red Lentils	ELISA Plate	96 tests	500089
Glyphosate*	Dipstick	5 tests	500098
Glyphosate	Dipstick	20 tests	500095

*Minimum order quantity: 5 kits

Vitellogenins (Not available for sale in Europe)

Product	Product format	Quantity	Article No.
Salmonid Vitellogenins	ELISA	480 tests	V01002402-480
Carp Vitellogenins	ELISA	480 tests	V01003402-480
Rainbow Trout Vitellogenins	ELISA	480 tests	V01004402-480
Zebrafish Vitellogenins	ELISA	480 tests	V01008402-480
Medaka Vitellogenins	ELISA	480 tests	V01013403-480
Fathead Minnow Vitellogenins	ELISA	96 tests	V01018401-096
Fathead Minnow Vitellogenins	ELISA	480 tests	V01018401-480

LIFE SCIENCES / R&D

AbraMag® Magnetic Purification Kits

Product	Product format	Quantity	Article No.
Genomic DNA Magnetic Purification Kit	Magnetic Beads Kit	100 tests	555020

Magnetic Separator Racks

Product	Compatibility	Article No.
Plate Magnetic Separator	2 x 96-well plate (bottom pull)	472236
Tube Magnetic Separator	60 x 11-13 mm tubes	472231
Tube Magnetic Separator	6 x 50 ml tubes	472291
Tube Magnetic Separator	5 x 15 ml tubes and 3 x 50 ml tubes	472250
Tube/Microcentrifuge Tube Magnetic Separator	1 x 1.5 ml or 1 x 15 ml and 1 x 50 ml	472280
Microcentrifuge Tube Magnetic Separator	6 x 1.5 ml microcentrifuge tubes	472260
Microcentrifuge Tube Magnetic Separator	32 x 1.5 ml microcentrifuge tubes	472287
Flask Magnetic Separator	Tissue culture flasks	472240

AbraMag® Magnetic Beads

Product	Product format	Quantity	Article No.
Amine	Magnetic Beads	50 mg	544080
Carboxyl	Magnetic Beads	50 mg	544085
Carboxyl	Magnetic Beads	125 mg	544086
Biotin	Magnetic Beads	10 mg	544000
Biotin	Magnetic Beads	25 mg	544001
Biotin	Magnetic Beads	5 mg	544002
Streptavidin	Magnetic Beads	10 mg	544050
Streptavidin	Magnetic Beads	25 mg	544051
Streptavidin	Magnetic Beads	5 mg	544052
anti-Rabbit IgG	Magnetic Beads	5 mg	544012
anti-Mouse IgG	Magnetic Beads	20 mg	544020
anti-Mouse IgG	Magnetic Beads	5 mg	544022
anti-Human IgG	Magnetic Beads	20 mg	544060
anti-Human IgG	Magnetic Beads	100 mg	544061
anti-Human IgG	Magnetic Beads	5 mg	544062
Protein A	Magnetic Beads	10 mg	544030
Protein A	Magnetic Beads	25 mg	544031
Protein A	Magnetic Beads	5 mg	544032
Protein G	Magnetic Beads	25 mg	544041
Protein G	Magnetic Beads	5 mg	544042
DNA Purification	Magnetic Beads	12 mg	544090
PCR Clean-Up and Size Select	Magnetic Beads	5 ml	544100
PCR Clean-Up and Size Select	Magnetic Beads	50 ml	544103





VETERINARY DIAGNOSTICS

In **industrial livestock production**, operating conditions are optimized to achieve the highest production output while minimizing costs. Given the high density of livestock and the production pressure, the emergence of infectious diseases is a major risk, and therefore **prevention and control measures are essential**.

Our diagnostic kits support the animal health management by:

- Detecting and monitoring epidemiological risks,
- Supporting vaccines & treatment development,
- Controlling the quality of produced meat,
- Improving animal welfare.

We are also continuously expanding the diagnostic test kit offering for pets, introducing now **indirect ELISA-Microarrays kits with an automation solution** for canine allergy diagnostic tests, completing our ELISA, PCR and LFD portfolio with a new method.

LIVESTOCK OR PETS, FIND YOUR SUITABLE TESTING METHOD



ELISA kits

- Easy and reliable tests, based on high quality reagents (recombinant antigens and monoclonal antibodies)
- Wide range of infectious diseases and animal species covered
- Different presentations available for the best adaptation to the requirements of each client



PCR Kits

- Flexible and user-friendly molecular solutions
- Convenient format, ready to use assay mix
- Optimized sensitivity
- Co-amplification of internal control
- Homogeneous thermal profile, allowing parallel testing of multiple parameters



Lateral Flow Assays

- Ease of use
- Can be applied directly on the field
- High sensitivity and specificity rates
- Results in 10 minutes



Allergy Testing: Microarrays

- Environmental and food sensitization kits
- Microarrays and Standard ELISA formats
- Fully automated analyzers available
- Allergen customizable panel

SEROLOGICAL ASSAYS

MULTISPECIES specialities



Product	Product description	No. of tests	Article No.
BRUCELLOSIS			
INgezim Brucella Compac 2.0	Blocking ELISA for the detection of specific antibodies to Brucella spp. in ruminants and porcine serum samples.	2 plates kit 5 plates kit	192 480 R.10.BRU.K.3/2 R.10.BRU.K.3/5
CRYPTOSPORIDIOSIS			
INgezim Crypto CROM	Lateral Flow Assay for the detection of Cryptosporidium antigen in biological samples (faeces from all species).	12 individual devices 30 individual devices	12 30 R.10.CRY.K.42/12 R.10.CRY.K.42/30
GIARDIOSIS			
INgezim Giardia CROM	Lateral Flow Assay for the detection of Giardia antigen in biological samples (faeces from all species).	12 individual devices 30 individual devices	12 30 R.10.GIA.K.42/12 R.10.GIA.K.42/30
INFLUENZA A			
INgezim Influenza A	Blocking ELISA for the detection of specific antibodies to Influenza type A virus in serum samples from different species.	2 plates kit 5 plates kit	192 480 R.10.FLU.K.3/2 R.10.FLU.K.3/5
ROTAVIROSIS			
INgezim Rotavirus DAS	Double antibody ELISA for the detection of Rotavirus (Type A) antigen in biological samples (faeces from all species).	1 plate kit	96 R.10.RT.K.2
INgezim Rota CROM	Lateral Flow Assay for the detection of Rotavirus (Type A) antigen in biological samples (faeces from all species).	12 individual devices 30 individual devices	12 30 R.10.RT.K.42/12 R.10.RT.K.42/30
TUBERCULOSIS			
INgezim Tuberculosis DR	Double recognition ELISA for specific antibodies detection to Mycobacterium bovis in serum samples from wild and domestic animals, except cattle.	2 plates kit 5 plates kit	192 480 R.10.TB.K.0/2 R.10.TB.K.0/5
WEST NILE FEVER			
INgezim West Nile Compac	Blocking ELISA for the detection of specific antibodies to WNV in birds and equine serum samples.	2 plates kit 5 plates kit	192 480 R.10.WNV.K.3/2 R.10.WNV.K.3/5
SARS-CoV-2			
INgezim Covid Vet	Indirect ELISA for the detection of specific antibodies against S protein of the SARS-CoV-2 virus in serum and plasma samples of minks, ferrets, cats and dogs.	2 plates kit 5 plates kit	192 480 R.10.CoS.K.1/2 R.10.CoS.K.1/5

PORCINE specialities



Product	Product description	No. of tests	Article No.
AUJESZKY DISEASE (ADV or PRV)			
INgezim ADV TOTAL	Indirect ELISA for the detection of specific total antibodies to ADV (vaccinated and infected animals) in porcine serum samples.	2 plates kit 5 plates kit	192 480 R.11.ADV.K.1/2 R.11.ADV.K.1/5
INgezim ADV gE Plus	Blocking ELISA for the detection of specific antibodies to ADV gE glycoprotein in porcine serum samples.	2 plates kit 5 plates kit	192 480 R.11.GEP.K.3/2 R.11.GEP.K.3/5
INgezim ADV gB	Blocking ELISA for the detection of specific antibodies to ADV gB glycoprotein in porcine serum samples.	2 plates kit 5 plates kit	192 480 R.11.GB.K.3/2 R.11.GB.K.3/5
CLASSICAL SWINE FEVER (CSFV)			
INgezim CSF Compac	Blocking ELISA for the detection of specific antibodies to Classical Swine Fever Virus in porcine serum samples.	2 plates kit 5 plates kit	192 480 R.11.CSF.K.3/2 R.11.CSF.K.3/5
AFRICAN SWINE FEVER (ASFV)			
INgezim PPA DAS 2.0	Double antibody ELISA for the detection of ASFV antigen in biological samples.	2 plates kit 5 plates kit	96 480 R.11.PPA.K.2/2 R.11.PPA.K.2/5
INgezim ASF CROM Ag	Lateral Flow Assay for the detection of ASFV antigen in porcine blood samples.	30 individual devices 100 individual devices	30 100 R.11.ASF.K.42/30 R.11.ASF.K.42/100
INgezim ASFV-R	Immunoenzymatic assay based on indirect ELISA technique for the detection of specific antibodies to cp312 and p30 proteins of ASFV in serum, blood (fresh or on paper) and spleen exudate samples, from swine and wild boar.	2 plates kit 5 plates kit	192 480 R.11.ASF.K1/2 R.11.ASF.K1/5
INgezim PPA CROM	Lateral Flow Assay for the detection of specific antibodies to ASFV in porcine serum and whole blood samples.	30 individual devices 100 individual devices	30 100 R.11.PPA.K.41/30 R.11.PPA.K.41/100
INgezim PPA Compac	Blocking ELISA for the detection of specific antibodies to ASFV in porcine serum samples.	2 plates kit 5 plates kit	192 480 R.11.PPA.K.3/2 R.11.PPA.K.3/5
INgezim ASFV/CSFV CROM Ab	Specific antibodies against to classical swine fever and African swine fever virus	25 individual devices	25 R.11.SFV.K.41/25
PORCINE BRUCELLOSIS			
INgezim Brucella Porcine	Indirect ELISA for the detection of specific antibodies to Brucella suis in porcine serum samples.	2 plates kit 5 plates kit	192 480 R.11.BP.K.1/2 R.11.BP.K.1/5
ERYSIPELAS			
INgezim Swine Erysipelas (Mal Rojo)	Indirect ELISA for the detection of specific antibodies to E. Rushiopathiae in porcine serum samples.	2 plates kit 5 plates kit	192 480 R.11.MR.K.1/2 R.11.MR.K.1/5
GLÄSSER DISEASE			
INgezim Haemophilus	Indirect ELISA for the detection of specific antibodies to Haemophilus parasuis in porcine serum samples.	2+2 plates kit	192 R.11.HPS.K.1/2
ENZOOTIC PNEUMONIA			
INgezim M. hyo Compac	Blocking ELISA for the detection of specific antibodies to Mycoplasma hyopneumoniae in porcine serum samples.	2 plates kit 5 plates kit	192 480 R.11.MHY.K.3/2 R.11.MHY.K.3/5
PORCINE INFLUENZA			
INgezim Influenza Porcina	Indirect ELISA for the detection of specific antibodies to SIV in porcine serum samples.	2 plates kit 5 plates kit	192 480 R.11.FLU.K.1/2 R.11.FLU.K.1/5
PORCINE CIRCOVIRUS			
INgezim PCV DAS	Double antibody ELISA for the detection of PCV2 antigen in Virus culture samples.	2 plates kit	192 R.11.CIR.K.2/2
INgezim Circovirus IgM/IgG	Capture ELISA for the detection of specific IgMs and IgGs to PCV2 in porcine serum samples.	2+2 plates kit	192 R.11.PCV.K.2
INgezim Circo IgG	Indirect ELISA for the detection of specific antibodies to PCV2 in porcine serum samples.	2 plates kit 5 plates kit	192 480 R.11.PCV.K.1/2 R.11.PCV.K.1/5
PORCINE PARVOVIRUS (PPV)			
INgezim PPV	Indirect ELISA for the detection of specific antibodies to PPV in porcine serum samples.	2 plates kit 5 plates kit	192 480 R.11.PPV.K.1/2 R.11.PPV.K.1/5
INgezim PPV Compac	Blocking ELISA for the detection of specific antibodies to PPV in porcine serum samples.	2 plates kit 5 plates kit	192 480 R.11.PPV.K.3/2 R.11.PPV.K.3/5
INgezim PPV DAS	Double antibody ELISA for the detection of PPV antigen in biological samples including virus cultures.	1 plate kit	96 R.11.PPV.K.2
PORCINE CORONAVIROSI (PRCV) AND TRANSMISSIBLE GASTROENTERITIS (TGEV)			
INgezim Corona Differential 2.0	Blocking ELISA for the detection and differentiation of antibodies to TGEV and PRCV in porcine serum samples.	2 plates kit 5 plates kit	192 480 R.11.DIF.K.3/2 R.11.DIF.K.3/5
INgezim TGEV 2.0	Blocking ELISA for the detection of specific antibodies to TGEV in porcine serum samples.	2 plates kit 5 plates kit	192 480 R.11.TGE.K.3/2 R.11.TGE.K.3/5
INgezim Swine Coronavirus 2.0	Blocking ELISA for the detection of specific antibodies to PRCV/TGEV in porcine serum samples.	2 plates kit 5 plates kit	192 480 R.11.PRC.K.3/2 R.11.PRC.K.3/5

Product	Product description	No. of tests	Article No.	
INgezim PEDV	Indirect ELISA for detection of specific antibodies to PEDV in porcine serum samples.	2 plates kit 5 plates kit	192 480	R.11.PED.K.1/2 R.11.PED.K.1/5
PORCINE PLEUROPNEUMONIA				
Swinecheck APP MIX	Indirect ELISA for the detection of antibodies against Actinobacillus pleuropneumoniae serotypes 1-2-9-11,3-6-8-15 and 4-5-7 in porcine serum.	6 plates kit	576	R.11.APP.K1/6
Swinecheck APP MIX 10-12	Indirect ELISA for the detection of antibodies against Actinobacillus pleuropneumoniae serotypes 10 and 12 in porcine serum.	2 plates kit	192	R.11.APX.K1/2
PORCINE REPRODUCTIVE AND RESPIRATORY SYNDROME (PRRSV)				
INgezim PRRS Blue	Indirect ELISA for the detection of specific antibodies to PRRSV (EU and US strains) in porcine serum samples.	5 plates kit	480	R.11.PR3.K.1/5
INgezim PRRS 2.0	Indirect ELISA for the detection of specific antibodies to PRRSV (EU and US strains) in porcine serum samples.	2 plates kit 5 plates kit	192 480	R.11.PR2.K.1/2 R.11.PR2.K.1/5
PORCINE ROTAVIROSI				
INgezim Porcine Rotavirus	Indirect ELISA for the detection of specific antibodies to Rotavirus (Type A) in porcine serum samples.	2 plates kit	192	R.11.RTP.K.1/2
PORCINE TUBERCULOSIS				
INgezim Swine TB	Indirect ELISA for the detection of specific antibodies to Mycobacterium bovis in wild boar and pig serum.	2 plates kit 5 plates kit	192 480	R.11.TBP.K.1/2 R.11.TBP.K.1/5
INgezim TB CROM Ab	Double recognition Lateral Flow Assay for specific detection of Mycobacterium bovis antibodies in swine and wild boar blood and serum.	30 individual devices 100 individual devices	30 100	R.11.TBP.K41/30 R.11.TBP.K41/100

RUMINANTS specialities



Product	Product description	No. of tests	Article No.	
BOVINE BESNOITIOSIS				
INgezim Besnoitia	Indirect ELISA for the detection of specific antibodies to Besnoitia besnoiti in bovine serum samples.	2 plates 5 plates	192 480	R.12.BES.K.1/2 R.12.BES.K.1/5
BOVINE LEUKOSIS (BLV)				
INgezim BLV Compac 2.0	Blocking ELISA for the detection of specific antibodies to BLV in bovine serum samples and milk samples.	2 plates kit 5 plates kit 10 plates kit	192 480 960	R.12.BLV.K.3/2 R.12.BLV.K.3/5 R.12.BLV.K.3/10
INgezim BLV Confirmation	Indirect ELISA for the confirmation of specific antibodies to BLV in bovine serum samples.	5+5 plates kit	480	R.12.BLV.K.1/5
BOVINE RESPIRATORY SYNCYTIAL (BRSV)				
INgezim BRSV Compac	Blocking ELISA for the detection of specific antibodies to BRSV in bovine serum samples.	2 plates kit 5 plates kit	192 480	R.12.BRS.K.3/2 R.12.BRS.K.3/5
BRUCELOSIS				
INgezim Brucella Bovine Milk	Indirect ELISA for the detection of specific antibodies to Brucella in bovine milk samples (individual or tank samples)	6 plates kit	576	R.12.BB.K.1/6
INgezim Brucella Bovine 2.0	Indirect ELISA for the detection of specific antibodies to Brucella in bovine serum samples (individual or pooled samples).	2 plates kit 5 plates kit 10 plates kit	192 480 960	R.12.BB2.K.1/2 R.12.BB2.K.1/5 R.12.BB2.K.1/10
INgezim Brucella ovis	Indirect ELISA for the detection of specific antibodies to Brucella ovis in small ruminants serum samples.	2 plates kit 5 plates kit	192 480	R.13.BO.K.1/2 R.13.BO.K.1/5
INgezim Brucella Small Ruminants	Indirect ELISA for the detection of specific antibodies to Brucella in ruminants serum samples.	2 plates kit 5 plates kit	192 480	R.13.BM.K.1/2 R.13.BM.K.1/5
INgezim Brucella AGID	Agar Gel immuno-diffusion (AGID) assay for the detection of specific antibodies (infection Ab and no vaccination Ab) present in ruminant serum samples infected with Brucella abortus and melitensis.	6 Agar plates with 14 wells per plate	84	R.12.BB2.K.7/84

Product	Product description	No. of tests	Article No.	
BOVINE ROTAVIROSI				
INgezim Rotavirus Bovine	Indirect ELISA for the detection of specific antibodies to RTB (Type A) in ruminants serum samples.	2 plates kit	192	R.12.RT.K.1/2
BLUE TONGUE (BTV)				
INgezim BTV DR	Double recognition ELISA for the detection of specific antibodies to BTV in ruminants serum samples.	2 plates kit 5 plates kit	192 480	R.12.BTV.K.0/2 R.12.BTV.K.0/5
INgezim BTV DAS	Double antibody ELISA for the detection of BTV antigen in BTV culture samples (to evaluate the performance of the culturing).	1 plate kit	96	R.12.BTV.K.2
INgezim BTV CROM	Indirect Lateral Flow Assay for the detection of specific antibodies to BTV in ruminants serum samples.	30 individual devices	30	R.12.BTV.K.41/30
INgezim BTV Compac 2.0	Blocking ELISA for the detection of specific antibodies to BTV in bovine serum samples (individual samples).	2 plates kit 5 plates kit	192 480	R.12.BTV.K.3/2 R.12.BTV.K.3/5
MAEDI VISNA - CAPRINE ARTHRITIS ENCEPHALITIS				
INgezim Maedi Screening	Indirect ELISA for the detection of specific antibodies to small ruminants Lentivirus. in small ruminants serum samples.	2 plates kit 5 plates kit	192 480	R.13.SLS.K.1/2 R.13.SLS.K.1/5
INgezim Maedi Confirmation	Indirect ELISA for the detection of specific antibodies to small ruminants Lentivirus in small ruminants serum samples.	2+2 plates kit	192	R.13.SLC.K.1/2
BOVINE VIRAL DIARRHEA (BVDV)				
INgezim BVD DAS	Double Antibody Sandwich ELISA, for the detection of BVDV antigen in blood, sera, plasma, leukocytes, ear tissue and cell culture in bovine..	1 plate kit 5 plate kit	96 480	R.12.BVD.K.2/1 R.12.BVD.K.2/5
INgezim BVD Erns	Double Antibody Sandwich ELISA, which uses a polyclonal antibody specific to Erns2 structural proteins, for the detection of BVDV antigen in bovine serum, blood, plasma, and ear tissue samples.	5 plates	480	R.12.BV2.K.2/5
INFECTIOUS BOVINE RHINOTRACHEITIS (IBRV)				
INgezim IBR gE Compac	Blocking ELISA for the detection of specific antibodies to gE protein from Infectious bovine Rhinotracheitis Virus (IBRV) in bovine serum samples.	2 plates kit 5 plates kit	192 480	R.12.IBE.K.3/2 R.12.IBE.K.3/5
INgezim IBR Compac 2.0.	Blocking ELISA for the detection of specific antibodies to IBRV gB glycoprotein (total) in bovine serum samples.	2 plates kit 5 plates kit	192 480	R.12.BHV.K.3/2 R.12.BHV.K.3/5
INgezim IBR 2.0.	Indirect ELISA for the detection of specific antibodies to IBRV (total) in bovine serum, plasma and milk samples.	2 plates kit 5 plates kit	192 480	R.12.BHV.K.1/2 R.12.BHV.K.1/5
RIFT VALLEY FEVER (RVFV)				
INgezim FVR Compac	Blocking ELISA for the detection of specific antibodies to RVFV in ruminants serum samples.	2 plates kit 5 plates kit	192 480	R.13.FVR.K.3/2 R.13.FVR.K.3/5
INgezim FVR IgM	Capture enzymatic immunoassay for the detection of specific antibodies (IgM) to RVFV in ruminants serum samples.	2 plates kit 5 plates kit	192 480	R.13.FVR.K.2/2 R.13.FVR.K.2/5
BOVINE NEOSPOROSIS				
INgezim Neospora 3.0.	Indirect ELISA for the detection of specific antibodies to Neospora caninum in bovine serum samples.	2 plates kit 5 plates kit	192 480	R.12.NC.K.1/2 R.12.NC.K.1/5
SCHMALLEBERG DISEASE (SBV)				
INgezim Schmallenberg Compac	Blocking ELISA for the detection of specific antibodies to Schmallenberg virus in ruminants serum samples.	2 plates kit 5 plates kit	192 480	R.13.SBV.K.3/2 R.13.SBV.K.3/5
PESTE DES PETITS RUMINANTS (PPRV)				
INgezim PPR Compac	Detection of specific antibodies to pestiviruses (BVDV and BDV) in serum and milk samples of bovine, ovine and goat.	2 plates kit 5 plates kit 10 plates kit	192 480 960	R.13.PPR.K.3/2 R.13.PPR.K.3/5 R.13.PPR.K.3/10
PESTIVIRUS				
INgezim Pestivirus Compac	Detection of specific antibodies to pestiviruses (BVDV and BDV) in serum and milk samples of bovine, ovine and goat.	2 plates kit 5 plates kit	192 480	R.12.BVD.K.3/2 R.12.BVD.K.3/5
PARATUBERCULOSIS				
INgezim Paratuberculosis	Indirect ELISA for the detection of specific antibodies to Mycobacterium avium spp paratuberculosis in serum and milk ruminant samples.	2 plates kit 5 plates kit	192 480	R.12.PTB.K.1/5 R.12.PTB.K.1/2



CANINE specialities



Product	Product description	No. of tests	Article No.
CANINE CORONAVIRUS DISEASE (CCV)			
INgezim Canine Coronavirus	Indirect ELISA for the detection of specific antibodies to CCV in canine serum samples.	1 plate kit	96 R.15.CCV.K.1
CANINE DISTEMPER (CDV)			
INgezim Canine Distemper (CDV) IgG	Indirect ELISA for the detection of specific antibodies to CDV (IgGs) in canine serum samples.	1 plate kit	96 R.15.CDV.K.1
INgezim Canine Distemper (CDV) IgM	Capture antibody ELISA for the detection of specific antibodies to CDV (IgMs) in canine serum samples.	1 plate kit	96 R.15.CDV.K.2
INgezim CDV-IC	Lateral Flow Assay for detection of Canine Distemper Virus in biological samples (tears, conjunctiva samples, nasal discharges, etc.).	12 & 30 individual devices	12 R.15.CDV.K.42/12 30 R.15.CDV.K.42/30
CANINE PARVOVIRUS DISEASE (CPV)			
INgezim Canine Parvovirus (CPV) IgM	Capture antibody ELISA for the detection of specific antibodies to CPV (IgMs) in canine serum samples.	1 plate kit	96 R.15.CPV.K.2
INgezim Canine Parvovirus (CPV) DAS	Double antibody ELISA for the detection of CPV antigens in biological samples (dog's faeces).	1 plate kit	96 R.15.CPV.K.2
INgezim Canine Parvovirus (CPV)	Indirect ELISA for the detection of specific antibodies to CPV in canine serum samples.	1 plate kit	96 R.15.CPV.K.1
INgezim Parvo CROM	Lateral Flow Assay for the detection of CPV antigen in canine serum samples.	12 individual devices 50 individual devices	12 R.15.CPV.K.42/12 50 R.15.CPV.K.42/50
CANINE PARVOVIRUS DISEASE (CPV) & GIARDIA			
INgezim CPV/Giardia IC	Lateral Flow Assay for detection of canine parvovirus and Giardia lamblia antigen in biological samples (faeces and intestinal content).	12 individual devices	12 R.15.CPV.GI.K.42/12
CANINE PARVOVIRUS DISEASE (CPV) & CORONAVIRUS			
INgezim CPV/CCV IC	Lateral Flow Assay for detection of Canine Parvovirus and Canine Coronavirus antigen in biological samples (faeces and intestinal content).	12 individual devices	12 R.15.CPV.CCV.K.42/12
CANINE PARVOVIRUS DISEASE (CPV), GIARDIA & CORONAVIRUS			
INgezim CPV/GIA/CCV IC	Lateral Flow Assay for the determination of parvovirus, canine coronavirus and Giardia lamblia in faeces samples.	12 individual devices	12 R.15.PGV.GI.CCV.K.42/12
CANINE EHRLICHIOSIS			
INgezim Ehrlichia	Indirect ELISA for the detection of specific antibodies to Ehrlichia canis in canine serum samples.	1 plate kit 10 plates kit	96 R.15.EHR.K.1 960 R.15.EHR.K.1/10
INgezim Ehrlichia Vet	Indirect ELISA for the detection of specific antibodies to Ehrlichia canis in canine serum samples.	32 wells kit	32 R.15.EHR.K.8/32
CANINE EHRLICHIOSIS			
INgezim Ehrli CROM	Specific antibodies against to Ehrlichia canis	12 individual devices 30 individual devices	12 R.15.EHR.K.4/12 30 R.15.EHR.K.4/30
CANINE ERLICHIOSIS AND ANAPLASMOSIS			
INgezim Ehr/ANA IC	Lateral Flow Assay for the detection of anti-Ehrlichia canis and anti-Anaplasma antibodies.	12 individual devices	12 R.15.EHA.K.41/12

Product	Product description	No. of tests	Article No.
CANINE LEISHMANIOSIS			
INgezim Leishmania	Indirect ELISA for the detection of specific antibodies to Leishmania spp infantum in canine serum samples.	1 plate kit 10 plates kit	96 R.15.LSH.K.1 960 R.15.LSH.K.1/10
CANINE LEISHMANIOSIS			
INgezim Leishmania CROM	Lateral Flow Assay for detection of antibodies to LSH in canine serum samples.	10 individual devices 30 individual devices	10 R.15.LSH.K.41/10 30 R.15.LSH.K.41/30
INgezim Leishmania Vet	Indirect ELISA for the detection of specific antibodies to Leishmania infantum in canine serum samples.	32 wells kit	32 R.15.LSH.K.8/32
RABIES			
INgezim E.I.A. Rabia	Double antibody enzymeimmunoassay for the quantification of rabies virus glycoprotein in infected cell culture samples.	2 plates kit	192 R.40.RAB.K.2/2
LYME DISEASE - BORRELIA BURGDORFERI			
INgezim Lyme CROM	Indirect Lateral Flow Assay for the detection of specific antibodies against to B. burgdogferi	12 individual devices	12 R.15.LY.K.4/12
DIROFILARIA IMMITIS - HEARTWORM			
INgezim Heart CROM	Indirect Lateral Flow Assay for the detection of dirofilaria immitis antigen	12 Individual devices 30 Individual devices	12 R.15.HW.K.4/12 30 R.15.HW.K.4/30
CANINE LEPTOSPIRA			
INgezim Leptospira IgM IC	Lateral flow test for the detection of IgM antibodies to Leptospira spp. in canine serum, plasma and whole blood.	12 individual devices	12 R.15.LEPTO.K.41/12
BRUCELLA CANIS			
INgezim Brucella Canis IC	Lateral Flow Assay for the detection of antibodies to Brucella canis in canine serum, plasma and whole blood.	12 individual devices	12 R.15.BC.K.41/12

RABBIT specialities



Product	Product description	No. of tests	Article No.
MYXOMATOSIS			
INgezim Myxomatosis	Indirect ELISA for the detection of specific antibodies to Myxomatosis virus in rabbit serum samples.	2 plates kit	192 R.17.MIX.K.1/2
RABBIT HAEMORRHAGIC DISEASE (RHDV)			
INgezim RHDV	Indirect ELISA for the detection of specific antibodies to RHDV in rabbit serum samples.	2 plates kit	192 R.17.RHD.K.1/2
INgezim RHDV DAS	Double antibody ELISA for the detection of RHDV antigen in rabbit liver and other biological samples.	1 plate kit	96 R.17.RHD.K.2
INgezim® RHDV1/2 DIF CROM	Duplex double antibody sandwich lateral flow assay for the detection of rabbit haemorrhagic disease virus antigen, differentiating between RHDV and RHDV2 in rabbit liver and liver exudate samples.	12 individual devices 30 individual devices	12 R.17.RHD.K.42/12 30 R.17.RHD.K.42/30

FELINE specialities



Product	Product description	No. of tests	Article No.
FELINE CORONAVIRUS (FCV)			
INgezim Feline Coronavirus (FCoV)	Indirect ELISA for the detection of specific antibodies to FCV in feline serum samples.	1 plate kit	96 R.16.FC.V.K.1
INgezim FCoV IC	Lateral Flow Assay for detection of specific antibodies to FCV in serum and blood samples.	12 individual devices	12 R.16.FC.V.K.41/12
FELINE IMMUNODEFICIENCY (FIV)			
INgezim FIV	Indirect ELISA for the detection of specific antibodies to FIV in feline serum samples.	1 plate kit	96 R.16.FIV.K.1
INgezim FIV Vet	Indirect ELISA for the detection of specific antibodies to FIV in feline serum samples.	32 wells kit	32 R.16.FIV.K.8/32
INgezim FIV Crom	Lateral Flow Assay for the detection of specific antibodies to FIV in feline serum and blood samples.	12 individual devices 30 individual devices	12 R.16.FI2.K.41/12 30 R.16.FI2.K.41/30
FELINE LEUKAEMIA (FeLV)			
INgezim FeLV	Indirect ELISA for the detection of specific antibodies to FeLV gp70 in feline serum samples.	1 plate kit	96 R.16.FLV.K.1
INgezim FeLV CROM	Lateral Flow Assay for detection of FeLV (p27) antigen in feline serum samples.	12 individual devices 30 individual devices	12 R.16.FLV.K.42/12 30 R.16.FLV.K.42/30
INgezim FeLV DAS	Double antibody ELISA for the detection of FeLV (p27) antigen in feline serum samples.	1 plate kit	96 R.16.FLV.K.2
INgezim FeLV Vet	Double antibody ELISA for the detection of FeLV (p27) antigen in feline serum samples.	32 wells kit	32 R.16.FLV.K.9/32
INgezim FeLV/FIV IC	Lateral Flow Assay for detection of FeLV antigen and specific antibodies to FIV in feline blood, serum or plasma samples.	12 individual devices	12 R.16.FFD.K.40/12
FELINE PANLEUCOPENIA			
INgezim FPV IC	Lateral Flow Assay for detection of Feline Panleucopenia Virus antigen in biological samples (feces and intestinal content)	12 individual devices	12 R.16.FPV.K.42/12
FELINE TOXOPLASMA			
INgezim Feline toxoplasma IC	Lateral Flow Assay for the detection of IgG and IgM antibodies to Toxoplasma gondii in feline serum, plasma and whole blood.	12 individual devices	12 R.16.TOX.K.41/12

EQUINE specialities



Product	Product description	No. of tests	Article No.
AFRICAN HORSE SICKNESS (AHSV)			
INgezim AHSV Compac Plus	Blocking ELISA for the detection of specific antibodies to AHSV in equine serum samples.	2 plates kit 5 plates kit	192 R.14.AHS.K.3/2 480 R.14.AHS.K.3/5
INgezim PEA DAS	Double antibody ELISA for the detection of specific AHSV antigen in equine biological samples (spleen and tissues).	1 plate kit	96 R.14.PEA.K.2
INgezim AHSV CROM	Lateral Flow Assay for the detection of specific antibodies to AHSV in equine serum samples.	30 individual devices	30 R.14.AHS.K.41/30
EQUINE INFECTIOUS ANEMIA (EIAV)			
INgezim Anemia DR	Double recognition ELISA for the detection of specific antibodies to EIAV in equine serum samples.	2 plates kit	192 R.14.AIE.K.0/2
INgezim Anemia CROM	Lateral Flow Assay for the detection of specific antibodies to EIAV in equine serum samples.	30 individual devices	30 R.14.AIE.K.41/30
EQUINE ARTERITIS (EAV)			
INgezim Arteritis 2.0	Indirect ELISA for the detection of specific antibodies to EAV in equine serum samples.	2+2 plates kit	192 R.14.EA2.K.1/4
EQUINE RHINOPNEUMONITIS			
INgezim Rhinoneumonitis	ELISA for the detection of specific antibodies to Equine herpesvirus (EHV) subtypes 1 & 4 in equine serum samples	2 plates kit 5 plates kit	192 R.14.HVE.K.1/2 480 R.14.HVE.K.1/5
WEST NILE FEVER (WNV)			
INgezim West Nile IgM	Capture antibody ELISA for the detection of specific IgMs to WNV in equine serum samples.	1+1 plates kit	96 R.14.WNV.K.2

VETLINE ASSAYS

VetLine is the veterinary product line of our company Gold Standard Diagnostics Frankfurt, providing a wide range of ELISA kits for antibody detection across a range of species including canine, feline, bovine, porcine, caprine, and poultry.

- Ready-to-use and colour coded reagents
- Standardized procedures
- ELISAs with cut off control
- Easy to use on automated systems
- Snap-off microtiter strip
- Long shelf-life

CANINE specialities



Product	Product description	No. of tests	Article No.
VetLine Anaplasma	Indirect ELISA for the detection of antibodies to Anaplasma in canine serum and plasma samples.	1 plate kit	96 ANAVT0850
VetLine Babesia	Indirect ELISA for the detection of antibodies to Babesia in canine serum and plasma samples.	1 plate kit	96 BABVT0890
VetLine Borrelia	Indirect ELISA for the detection of antibodies to Borrelia in canine serum and plasma samples.	1 plate kit	96 BORVT0040
VetLine Canine C-Reactive Protein (CCRP)	Indirect ELISA for the detection of antibodies to canine C-Reactive protein in canine serum and plasma samples.	1 plate kit	96 CCRPV4050
VetLine Canine Distemper Virus (CDV)	Indirect ELISA for the detection of antibodies to CDV in canine serum and plasma samples.	1 plate kit	96 MEAVT0330
VetLine Canine Parvovirus (CPV)	Indirect ELISA for the detection of antibodies to CPV in canine serum and plasma samples.	1 plate kit	96 PARVT0370
VetLine Dirofilaria Antigen	Double antibody ELISA for the detection of Dirofilaria antigen in canine serum and plasma samples.	1 plate kit	96 DIRVT4760
VetLine Echinococcus	Indirect ELISA for the detection of antibodies to Echinococcus in canine serum and plasma samples.	1 plate kit	96 ECHVT0130
VetLine Ehrlichia	Indirect ELISA for the detection of antibodies to Ehrlichia in canine serum and plasma samples.	1 plate kit	96 EHRVT0930
VetLine Leishmania	Indirect ELISA for the detection of antibodies to Leishmania in canine serum and plasma samples.	1 plate kit	96 LEIVT0310
VetLine Leptospira IgM	Indirect ELISA for the detection of IgM antibodies to Leptospira in canine serum and plasma samples.	1 plate kit	96 LEPVM0660
VetLine Leptospira	Indirect ELISA for the detection of antibodies to Leptospira in canine serum and plasma samples.	1 plate kit	96 LEPVT0660
VetLine Sarcoptes	Indirect ELISA for the detection of antibodies to Sarcoptes scabiei in serum samples.	1 plate kit	96 SARVT0980
VetLine Toxocara	Indirect ELISA for the detection of antibodies to Toxocara in canine serum and plasma samples.	1 plate kit	96 TOCVT0450

FELINE specialities



Product	Product description	No. of tests	Article No.
VetLine Bartonella	Indirect ELISA for the detection of antibodies to Bartonella in feline serum and plasma samples.	1 plate kit	96 BARVT0900
VetLine Feline Corona Virus (FCoV/FIP)	Indirect ELISA for the detection of antibodies to feline Coronavirus in feline serum and plasma samples.	1 plate kit	96 FIPVT0870
VetLine Feline Immunodeficiency Virus (FIV)	Indirect ELISA for the detection of antibodies to FIV in feline serum and plasma samples.	1 plate kit	96 FIVVT0750
VetLine Feline Leukemia Virus (FeLV) Antigen	Double antibody ELISA for the detection of FeLV antigen in feline serum and plasma samples.	1 plate kit	96 FELVT4800

MULTISPECIES specialities



Product	Product description	No. of tests	Article No.
VetLine Brucella	Indirect ELISA for the detection of antibodies to Brucella in bovine and porcine serum, pooled serum and milk samples.	1 plate kit	96 BRUVT0050
VetLine Borrelia	Indirect ELISA for the detection of antibodies to Borrelia in veterinary serum and plasma samples.	1 plate kit	96 BORVT0040
VetLine Clostridium tetani toxin 5S	Indirect ELISA for the detection of antibodies to Clostridium tetani toxin in veterinary serum and plasma samples.	1 plate kit	96 TETVT5043
VetLine Giardia Antigen	Double antibody ELISA for the detection of Giardia antigen in stool samples.	1 plate kit	96 GIAVT4160
VetLine Hepatitis E Virus (HEV) Elisa	Indirect ELISA for the detection of antibodies to Hepatitis E Virus (HEV) in veterinary serum and plasma samples.	1 plate kit	96 HEVVT0780
VetLine TBE/FSME	Indirect ELISA for the detection of antibodies to TBE/FSME in Multispecies serum and plasma samples.	1 plate kit	96 TICVT0440
VetLine TBE/FSME IgM	Indirect ELISA for the detection of IgM antibodies to TBE/FSME in Multispecies serum and plasma samples.	1 plate kit	96 TICVM0440
VetLine Toxoplasma	Indirect ELISA for the detection of antibodies to Toxoplasma in canine/feline serum and plasma samples.	1 plate kit	96 TOXVT0460
VetLine Toxoplasma IgM	Indirect ELISA for the detection of IgM antibodies to Toxoplasma in canine/feline serum and plasma samples.	1 plate kit	96 TOXVM0460

PORCINE specialities



Product	Product description	No. of tests	Article No.
VetLine Pasteurella multocida Toxin Antibody	Indirect ELISA for the detection of antibodies to Pasteurella multocida Toxin in porcine serum and plasma samples.	1 plate kit	96 PASVT0960
VetLine Trichinella	Indirect ELISA for the detection of antibodies to Trichinella in porcine serum and plasma samples.	1 plate kit	96 TRIVT0480

AVIAN specialities



Product	Product description	No. of tests	Article No.
VetLine Riemerella	Indirect ELISA for the detection of antibodies to Riemerella in poultry serum and plasma samples.	1 plate kit	96 RIEMVT0880

RUMINANT specialities



Product	Product description	No. of tests	Article No.
VetLine Bovine Haptoglobin	Indirect ELISA for the detection of antibodies to Bovine Haptoglobin in bovine serum and plasma samples.	1 plate kit	96 BHAPV4040
VetLine Coxiella	Indirect ELISA for the detection of antibodies to Coxiella in plasma and milk.	1 plate kit	96 COXVT0600
VetLine Coxiella Phase 1	Indirect ELISA for the detection of antibodies to Coxiella Phase 1 in serum, plasma and milk.	1 plate kit	96 COX1VT0600
VetLine Coxiella Phase 2	Indirect ELISA for the detection of antibodies to Coxiella Phase 2 in serum plasma and milk.	1 plate kit	96 COX2VT0600

ALLERGY DIAGNOSTICS

The implementation of Canine INgezim PLEX Environmental and Food Sensitization kits, based on indirect ELISA Micro-arrays, results in significant cost & time reduction and enhanced accuracy compared to conventional methods or outsourcing testing to third parties.

The kits simultaneously measure the semi-quantitative level of 30 (environmental) and 22 (food) allergen-specific IgE in canine serum.



Canine and Feline Allergy Kits

Product	Product description	No. of tests	Article No.
Canine INgezim PLEX Environmental Sensitization kit	ELISA-microarray immunoassays designed to simultaneously measure the semi-quantitative levels of 30 environmental allergen specific IgE in canine serum.	30 Allergens 96	15.CEA.K.61
Canine INgezim PLEX Food Sensitization kit	ELISA-microarray immunoassays designed to simultaneously measure the semi-quantitative levels of 22 food allergen specific IgE in canine serum.	22 Allergens 96	15.CFA.K.61
Canine Food Allergy 16 Screen IgE	ELISA immunoassays designed to simultaneously measure the qualitative levels of 16 food allergen specific IgE in canine serum.	16 Allergens 5 patients	ILE-SCH20
Canine Food Intolerance 16 Screen IgG	ELISA immunoassays designed to simultaneously measure the qualitative levels of 16 food allergen specific IgG in canine serum.	16 Allergens 5 patients	ILE-SCH21
Feline Food Allergy 16 Screen IgE	ELISA immunoassays designed to simultaneously measure the qualitative levels of 16 food allergen specific IgE in feline serum.	16 Allergens 5 patients	ILE-SCK20
Feline Food Intolerance 16 Screen IgG	ELISA immunoassays designed to simultaneously measure the qualitative levels of 16 food allergen specific IgG in feline serum.	16 Allergens 5 patients	ILE-SCK21

Automation with Hailstorm



- Automatic analyzer and reader for ELISA, ELISA-microarray and CLIA assays
- Programmable for a wide range of protocols
- Two microplates sites available for assays
- Processes, analyzes and provides results in the form of reports and in different file formats

Real-time PCR Assays (100 reactions)

PCR Kits for CATTLE



Product	Article No.
INgene q Anaplasma marginale	R.12.AMA.K.5/100
INgene q Anaplasma phagocytophilum	R.10.APH.K.5/100
INgene q Anaplasma spp.	R.10.ANS.K.5/100
INgene q Babesia bigemina	R.12.BBI.K.5/100
INgene q Babesia bovis	R.12.BBO.K.5/100
INgene q Bacteroides fragilis enterotoxina	R.10.BFT.K.5/100
INgene q Besnoitia besnoiti	R.12.BES.K.5/100
INgene q Bibersteinia trehalosi	R.10.BIB.K.5/100
INgene q BoHV-1	R.12.BH1.K.5/100
INgene q BoHV-2	R.12.BH2.K.5/100
INgene q BoHV-4	R.12.BH4.K.5/100
INgene q Bovine Coronavirus	R.12.BCo.K.5/100
INgene q Bovine Parainfluenza 3	R.12.PI3.K.5/100
INgene q Bovine Torovirus	R.10.BoT.K.5/100
INgene q BRSV	R.12.BRS.K.5/100
INgene BRUCE-LADDER V *	R.10.BRU.K.5/50
INgene q Brucella spp.	R.10.BSP.K.5/100
INgene q Brucella Typing MULTIPLEX	R.10.BRM.K.5TC/Q
INgene q Brucella Typing ROX MULTIPLEX	R.10.BRM.K.5TX/Q
INgene q BVDV - BDV	R.10.BOD.K.5/100
INgene q C. fetus and T. foetus MULTIPLEX	R.12.XFE.K.5/100
INgene q Campylobacter coli	R.10.CAM.K.5/100
INgene q Campylobacter fetus	R.10.CFE.K.5/100
INgene q Campylobacter jejuni	R.10.CJE.K.5/100
INgene q Campylobacter spp.	R.10.CPY.K.5/100
INgene q Chlamydia abortus	R.10.CAB.K.5/100
INgene q Chlamydiaceae	R.10.CHL.K.5/100
INgene q Clostridioides difficile Toxin A	R.10.CDA.K.5/100
INgene q Clostridioides difficile Toxin B	R.10.CDB.K.5/100
INgene q Clostridium botulinum	R.10.CBO.K.5/100
INgene q Clostridium chauvoei	R.10.CHA.K.5/100
INgene q Clostridium haemolyticum	R.10.CLH.K.5/100
INgene q Clostridium novyi	R.10.CNO.K.5/100
INgene q Clostridium septicum	R.10.CSE.K.5/100
INgene q Corynebacterium pseudotuberculosis	R.10.COR.K.5/100
INgene q Coxiella burnetii	R.10.COX.K.5/100
INgene q Cryptosporidium parvum	R.10.CPA.K.5/100
INgene q Cryptosporidium spp.	R.10.CRY.K.5/100
INgene q Dichelobacter nodosus	R.10.DIN.K.5/100
INgene q Eimeria spp.	R.10.EIM.K.5/100
INgene q Fusobacterium necrophorus	R.10.FUS.K.5/100
INgene q Giardia intestinalis	R.10.GIN.K.5/100
INgene q Histophilus somni	R.10.HSO.K.5/100
INgene q Influenza D virus	R.10.IFD.K.5/100
INgene q Leukotoxin Mannheimia haemolytica	R.10.LKT.K.5/100

Product	Article No.
INgene q Listeria monocytogenes	R.10.LMO.K.5/100
INgene q M. bovis and S. aureus MULTIPLEX	R.10.XMA.K.5/100
INgene q Mannheimia haemolytica	R.10.MAN.K.5/100
INgene q Moraxella bovis	R.12.MRX.K.5/100
INgene q Mycobacterium bovis & M.caprae	R.10.MYB.K.5/100
INgene q Mycobacterium tuberculosis complex	R.10.MTB.K.5/100
INgene q Mycoplasma bovis	R.12.MBO.K.5/100
INgene q Mycoplasma wenyonii	R.12.MYW.K.5/100
INgene q Neovirus	R.12.NEB.K.5/100
INgene q Neospora caninum	R.10.NEO.K.5/100
INgene q Norovirus Genotype 3	R.12.NVG.K.5/100
INgene q Paeniclostridium sordelli	R.10.CSO.K.5/100
INgene q Paratuberculosis	R.10.PTB.K.5/100
INgene q Paratuberculosis MULTIPLEX	R.10.XPT.K.5/100
INgene q Pasteurella multocida	R.10.PAS.K.5/100
INgene q Pathogenic Leptospira	R.10.LEP.K.5/100
INgene q Piroplasma	R.10.PIR.K.5/100
INgene q Prototheca spp.	R.10.PRT.K.5/100
INgene q Pseudomonas aeruginosa	R.10.PSE.K.5/100
INgene q Rhodococcus equi	R.10.REQ.K.5/100
INgene q Rotavirus A	R.10.RTA.K.5/100
INgene q Salmonella enterica	R.10.SEN.K.5/100
INgene q Salmonella infantis	R.10.STI.K.5/100
INgene q Staphylococcus aureus	R.10.SAU.K.5/100
INgene q Staphylococcus epidermidis	R.10.SEP.K.5/100
INgene q Staphylococcus haemolyticus	R.10.SHA.K.5/100
INgene q Streptococcus agalactiae	R.10.SAG.K.5/100
INgene q Streptococcus dysgalactiae	R.10.SDY.K.5/100
INgene q Streptococcus uberis	R.10.SUB.K.5/100
INgene q Theileria annulata	R.12.THA.K.5/100
INgene q Toxoplasma gondii	R.10.TOX.K.5/100
INgene q Tritrichomonas foetus	R.12.TRI.K.5/100
INgene q Ureaplasma diversum	R.12.URE.K.5/100

*Conventional end-point PCR, 50 reactions format only

PCR Kits for SMALL RUMINANTS



Product	Article No.
INgene q Anaplasma ovis	R.13.AOV.K.5/100
INgene q Anaplasma phagocytophilum	R.10.APH.K.5/100
INgene q Anaplasma spp.	R.10.ANS.K.5/100
INgene q Bacteroides fragilis enterotoxina	R.10.BFT.K.5/100
INgene q Bibersteinia trehalosi	R.10.BIB.K.5/100
INgene q Bovine Torovirus	R.10.BoT.K.5/100
INgene BRUCE-LADDER V *	R.10.BRU.K.5/50
INgene q Brucella ovis	R.13.BOV.K.5/100

Product	Article No.
INgene q Brucella spp.	R.10.BSP.K.5/100
INgene q Brucella Typing MULTIPLEX	R.10.BRM.K.5TC/Q
INgene q Brucella Typing ROX MULTIPLEX	R.10.BRM.K.5TX/Q
INgene q BVDV - BDV	R.10.BOD.K.5/100
INgene q Campylobacter coli	R.10.CAM.K.5/100
INgene q Campylobacter fetus	R.10.CFE.K.5/100
INgene q Campylobacter jejuni	R.10.CJE.K.5/100
INgene q Campylobacter spp.	R.10.CPY.K.5/100
INgene q Chlamydia abortus	R.10.CAB.K.5/100
INgene q Chlamydiaceae	R.10.CHL.K.5/100
INgene q Clostridioides difficile Toxin A	R.10.CDA.K.5/100
INgene q Clostridioides difficile Toxin B	R.10.CDB.K.5/100
INgene q Clostridium botulinum	R.10.CBO.K.5/100
INgene q Clostridium chauvoei	R.10.CHA.K.5/100
INgene q Clostridium haemolyticum	R.10.CLH.K.5/100
INgene q Clostridium novyi	R.10.CNO.K.5/100
INgene q Clostridium septicum	R.10.CSE.K.5/100
INgene q Contagious Ecthyma	R.13.ORF.K.5/100
INgene q Corynebacterium pseudotuberculosis	R.10.COR.K.5/100
INgene q Coxiella burnetii	R.10.COX.K.5/100
INgene q Cryptosporidium parvum	R.10.CPA.K.5/100
INgene q Cryptosporidium spp.	R.10.CRY.K.5/100
INgene q Dichelobacter nodosus	R.10.DIN.K.5/100
INgene q Eimeria spp.	R.10.EIM.K.5/100
INgene q Erysipelothrix rhusiopathiae	R.10.ERU.K.5/100
INgene q Fusobacterium necrophorus	R.10.FUS.K.5/100
INgene q Giardia intestinalis	R.10.GIN.K.5/100
INgene q Histophilus somni	R.10.HSO.K.5/100
INgene q Leukotoxin Mannheimia haemolytica	R.10.LKT.K.5/100
INgene q Listeria monocytogenes	R.10.LMO.K.5/100
INgene q M. bovis and S. aureus MULTIPLEX	R.10.XMA.K.5/100
INgene q Maedi Visna - CAEV	R.13.SRL.K.5/100
INgene q Mannheimia haemolytica	R.10.MAN.K.5/100
INgene q Mycobacterium avium complex	R.10.MAV.K.5/100
INgene q Mycobacterium bovis & M. Caprae	R.10.MYB.K.5/100
INgene q Mycobacterium tuberculosis complex	R.10.MTB.K.5/100
INgene q Mycoplasma agalactiae	R.13.MYA.K.5/100
INgene q Mycoplasma mycoides	R.13.MMC.K.5/100
INgene q Mycoplasma ovipneumoniae	R.13.MOV.K.5/100
INgene q Mycoplasma ovis	R.13.MYO.K.5/100
INgene q Mycoplasma putrefaciens	R.13.MPU.K.5/100
INgene q Neospora caninum	R.10.NEO.K.5/100
INgene q Paeniclostridium sordelli	R.10.CSO.K.5/100
INgene q Paratuberculosis	R.10.PTB.K.5/100
INgene q Paratuberculosis (multiplex)	R.10.XPT.K.5/100
INgene q Pasteurella multocida	R.10.PAS.K.5/100
INgene q Pathogenic Leptospira	R.10.LEP.K.5/100
INgene q Piroplasma	R.10.PIR.K.5/100
INgene q Prototheca spp.	R.10.PRT.K.5/100

Product	Article No.
INgene q Pseudomonas aeruginosa	R.10.PSE.K.5/100
INgene q Rotavirus A	R.10.RTA.K.5/100
INgene q Salmonella abortus ovis	R.13.SAB.K.5/100
INgene q Salmonella enterica	R.10.SEN.K.5/100
INgene q Salmonella infantis	R.10.STI.K.5/100
INgene q Staphylococcus aureus	R.10.SAU.K.5/100
INgene q Staphylococcus epidermidis	R.10.SEP.K.5/100
INgene q Staphylococcus haemolyticus	R.10.SHA.K.5/100
INgene q Streptococcus agalactiae	R.10.SAG.K.5/100
INgene q Streptococcus dysgalactiae	R.10.SDY.K.5/100
INgene q Streptococcus equi	R.10.SEQ.K.5/100
INgene q Streptococcus uberis	R.10.SUB.K.5/100
INgene q Toxoplasma gondii	R.10.TOX.K.5/100

*Conventional end-point PCR, 50 reactions format only

PCR Kits for SWINE



Product	Article No.
INgene q Actinobacillus pleuropneumoniae	R.11.ABP.K.5/100
INgene q Actinobacillus suis	R.11.ASU.K.5/100
INgene q Anaplasma spp.	R.10.ANS.K.5/100
INgene q ASFV (PPA)	R.11.PPA.K.5TX/Q
INgene q Atypical Porcine Pestivirus	R.11.APP.K.5/100
INgene q Bacteroides fragilis enterotoxina	R.10.BFT.K.5/100
INgene q B. hyodysenteriae and B. pilosicoli MULTIPLEX	R.11.XBR.K.5/100
INgene q Bordetella bronchiseptica	R.10.BBR.K.5/100
INgene q Brachyspira hyodysenteriae	R.11.BHY.K.5/100
INgene q Brachyspira intermedia	R.10.BIN.K.5/100
INgene q Brachyspira pilosicoli	R.10.BPI.K.5/100
INgene q Brachyspira spp.	R.10.BRA.K.5/100
INgene BRUCE-LADDER SUIS *	R.10.BSu.K.5/50
INgene BRUCE-LADDER V *	R.10.BRU.K.5/50
INgene q Brucella spp.	R.10.BSP.K.5/100
INgene q Brucella suis	R.11.BSI.K.5/100
INgene q Brucella Typing MULTIPLEX	R.10.BRM.K.5TC/Q
INgene q Brucella Typing ROX MULTIPLEX	R.10.BRM.K.5TX/Q
INgene q Campylobacter coli	R.10.CAM.K.5/100
INgene q Campylobacter jejuni	R.10.CJE.K.5/100
INgene q Chlamydia abortus	R.10.CAB.K.5/100
INgene q Chlamydiaceae	R.10.CHL.K.5/100
INgene q Clostridioides difficile Toxin A	R.10.CDA.K.5/100
INgene q Clostridioides difficile Toxin B	R.10.CDB.K.5/100
INgene q Clostridium botulinum	R.10.CBO.K.5/100
INgene q Clostridium chauvoei	R.10.CHA.K.5/100
INgene q Clostridium haemolyticum	R.10.CLH.K.5/100
INgene q Clostridium novyi	R.10.CNO.K.5/100
INgene q Clostridium septicum	R.10.CSE.K.5/100
INgene q Coxiella burnetii	R.10.COX.K.5/100
INgene q Cryptosporidium parvum	R.10.CPA.K.5/100
INgene q Cryptosporidium spp.	R.10.CRY.K.5/100
INgene q Cystoisospora suis	R.11.ISU.K.5/100
INgene q E. coli AIDA & EAST	R.11.XAD.K.5/100
INgene q Eimeria spp.	R.10.EIM.K.5/100

Product	Article No.
INgene q Erysipelothrix rhusiopathiae	R.10.ERU.K.5/100
INgene q Glaesserella parasuis	R.11.HPS.K.5/100
INgene q Hepatitis E virus	R.11.HEP.K.5/100
INgene q Influenza A virus	R.10.IFA.K.5/100
INgene q Influenza D virus	R.10.IFD.K.5/100
INgene q Lawsonia intracellularis	R.11.LAW.K.5/100
INgene q Listeria monocytogenes	R.10.LMO.K.5/100
INgene q Mycobacterium avium complex	R.10.MAV.K.5/100
INgene q Mycobacterium bovis & M.caprae	R.10.MYB.K.5/100
INgene q Mycobacterium tuberculosis complex	R.10.MTB.K.5/100
INgene q Mycoplasma hyopneumoniae	R.11.MHP.K.5/100
INgene q Mycoplasma hyorhinis	R.11.MHR.K.5/100
INgene q Mycoplasma hyosynoviae	R.11.MHS.K.5/100
INgene q Mycoplasma suis	R.11.MSU.K.5/100
INgene q Paeniclostridium sordelli	R.10.CSO.K.5/100
INgene q Pasteurella multocida	R.10.PAS.K.5/100
INgene q Pathogenic Leptospira	R.10.LEP.K.5/100
INgene q PCV2	R.11.PC2.K.5/100
INgene q PCV3	R.11.PC3.K.5/100
INgene q PEDV	R.11.PED.K.5/100
INgene q Porcine Parvovirus	R.11.PoP.K.5/100
INgene q PRRS Universal	R.11.PRU.K.5TX/Q
INgene q Pseudomonas aeruginosa	R.10.PSE.K.5/100
INgene q Rhodococcus equi	R.10.REQ.K.5/100
INgene q Rotavirus A	R.10.RTA.K.5/100
INgene q Rotavirus C	R.11.RTC.K.5/100
INgene q Salmonella enterica	R.10.SEN.K.5/100
INgene q Seneca Virus Valley	R.11.SVV.K.5/100
INgene q Staphylococcus aureus	R.10.SAU.K.5/100
INgene q Staphylococcus hyicus	R.11.STH.K.5/100
INgene q Streptococcus suis	R.11.SSU.K.5/100
INgene q Suid Alpha Herpesvirus (Aujeszky)	R.11.SHV.K.5/100
INgene q Swine Delta Coronavirus	R.11.SDC.K.5/100
INgene q Swine Pox Virus	R.11.SWP.K.5/100
INgene q TGEV	R.11.TGV.K.5/100
INgene q Trichuris suis	R.11.TSU.K.5/100

PCR Kits for POULTRY



Product	Article No.
INgene q Avian Coronavirus (IBV & TuCV)	R.18.ACO.K.5/100
INgene q Avibacterium paragallinarum	R.18.AVI.K.5/100
INgene q Bordetella avium	R.18.BIU.K.5/100
INgene q Brachyspira intermedia	R.10.BIN.K.5/100
INgene q Brachyspira pilosicoli	R.10.BPI.K.5/100
INgene q Brachyspira spp.	R.10.BRA.K.5/100
INgene q Campylobacter coli	R.10.CAM.K.5/100
INgene q Campylobacter hepaticus	R.18.CHE.K.5/100
INgene q Campylobacter jejuni	R.10.CJE.K.5/100
INgene q Campylobacter spp.	R.10.CPY.K.5/100
INgene q Eimeria acervulina	R.18.EAC.K.5/100
INgene q Clostridium botulinum	R.10.CBO.K.5/100

Product	Article No.
INgene q Eimeria brunetti	R.18.EBR.K.5/100
INgene q Eimeria maxima	R.18.EMX.K.5/100
INgene q Eimeria mitis	R.18.EMI.K.5/100
INgene q Eimeria necatrix	R.18.ENE.K.5/100
INgene q Eimeria praecox	R.18.EPR.K.5/100
INgene q Eimeria spp.	R.10.EIM.K.5/100
INgene q Eimeria tenella	R.18.ETE.K.5/100
INgene q Fowlpox virus	R.18.FPO.K.5/100
INgene Histomonas meleagridis	R.18.HME.K.5/100
INgene q Inclusion body hepatitis (Adenovirus I)	R.18.FAD.K.5/100
INgene q Influenza A virus	R.10.IFA.K.5/100
INgene q M. gallisepticum and M. synoviae MULTIPLEX	R.18.XMG.K.5/100
INgene q Marek (MDV)	R.18.MRE.K.5/100
INgene q Mycobacterium avium complex	R.10.MAV.K.5/100
INgene q Mycobacterium tuberculosis complex	R.10.MTB.K.5/100
INgene q Mycoplasma gallisepticum	R.18.MGA.K.5/100
INgene q Mycoplasma synoviae	R.18.MSY.K.5/100
INgene q Ornithobacterium rhinotracheale	R.18.ORN.K.5/100
INgene q Pasteurella multocida	R.10.PAS.K.5/100
INgene q Riemerella anatipestifer	R.18.RIE.K.5/100
INgene q Salmonella enterica	R.10.SEN.K.5/100
INgene q Salmonella gallinarum	R.18.SGA.K.5/100
INgene q Salmonella infantis	R.10.STI.K.5/100
INgene q Salmonella pullorum	R.18.SPU.K.5/100

PCR Kits for PETS



Product	Article No.
INgene q Anaplasma phagocytophilum	R.10.APH.K.5/100
INgene q Anaplasma spp.	R.10.ANS.K.5/100
INgene q Babesia spp. pets	R.15.BPE.K.5/100
INgene q Bartonella henselae	R.16.BHE.K.5/100
INgene q Bartonella spp.	R.16.BAR.K.5/100
INgene q Bordetella bronchiseptica	R.10.BBR.K.5/100
INgene q Borrelia burgdorferi	R.10.BBS.K.5/100
INgene BRUCE-LADDER V *	R.10.BRU.K.5/50
INgene q Brucella canis	R.15.BRC.K.5/100
INgene q Brucella spp.	R.10.BSP.K.5/100
INgene q Brucella Typing MULTIPLEX	R.10.BRM.K.5TC/Q
INgene q Brucella Typing ROX MULTIPLEX	R.10.BRM.K.5TX/Q
INgene q Campylobacter coli	R.10.CAM.K.5/100
INgene q Campylobacter jejuni	R.10.CJE.K.5/100
INgene q Campylobacter spp.	R.10.CPY.K.5/100
INgene q Canine Circovirus	R.15.CaC.K.5/100
INgene q Canine Coronavirus	R.15.CCO.K.5/100
INgene q Canine Distemper virus	R.15.CaD.K.5/100
INgene q Canine Herpesvirus	R.15.CHV.K.5/100
INgene q Canine Parainfluenza virus	R.15.CPI.K.5/100
INgene q Canine Parvovirus 2	R.15.CaP.K.5/100
INgene q Clostridium botulinum	R.10.CBO.K.5/100

Product	Article No.
INgene q Cryptosporidium spp.	R.10.CRY.K.5/100
INgene q Cytauxzoon felis	R.16.CYF.K.5/100
INgene q Cytauxzoon spp.	R.16.CYT.K.5/100
INgene q Dirofilaria immitis	R.10.DIM.K.5/100
INgene q Dirofilaria repens	R.10.DRE.K.5/100
INgene q Ehrlichia canis	R.15.EHC.K.5/100
INgene q Ehrlichia spp.	R.10.EHR.K.5/100
INgene q Encephalitozoon cuniculi	R.10.ECU.K.5/100
INgene q Feline Calicivirus	R.16.FeC.K.5/100
INgene q Feline Coronavirus	R.16.FCo.K.5/100
INgene q Feline Herpesvirus	R.16.FHV.K.5/100
INgene q Feline Immunodeficiency virus	R.16.Fel.K.5/100
INgene q Feline Leukemia Virus	R.16.FeL.K.5/100
INgene q Feline Panleukopenia virus	R.16.FPL.K.5/100
INgene q Giardia intestinalis	R.10.GIN.K.5/100
INgene q Haemoplasma spp. Pets	R.10.HAE.K.5/100
INgene q Leishmania spp.	R.15.LEI.K.5/100
INgene q Mycoplasma haemofelis & M. Haemocanis	R.10.MFC.K.5/100
INgene q Neospora caninum	R.10.NEO.K.5/100
INgene q Pasteurella multocida	R.10.PAS.K.5/100
INgene q Pathogenic Leptospira	R.10.LEP.K.5/100
INgene q Piroplasma	R.10.PIR.K.5/100
INgene q Toxoplasma gondii	R.10.TOX.K.5/100

*Conventional end-point PCR, 50 reactions format only



PCR Kits for EQUINE

Product	Article No.
INgene q Anaplasma spp.	R.10.ANS.K.5/100
INgene q Anaplasma phagocytophilum	R.10.APH.K.5/100
INgene q Babesia caballi	R.14.BCA.K.5/100
INgene BRUCE-LADDER V *	R.10.BRU.K.5/50
INgene q Brucella spp.	R.10.BSP.K.5/100
INgene q Brucella Typing MULTIPLEX	R.10.BRM.K.5TC/Q
INgene q Brucella Typing ROX MULTIPLEX	R.10.BRM.K.5TX/Q
INgene q Campylobacter coli	R.10.CAM.K.5/100
INgene q Campylobacter jejuni	R.10.CJE.K.5/100
INgene q Chlamydiae	R.10.CHL.K.5/100
INgene q Clostridioides difficile Toxin A	R.10.CDA.K.5/100
INgene q Clostridioides difficile Toxin B	R.10.CDB.K.5/100
INgene q Clostridium botulinum	R.10.CBO.K.5/100
INgene q Corynebacterium pseudotuberculosis	R.10.COR.K.5/100
INgene q Coxiella burnetii	R.10.COX.K.5/100
INgene q Cryptosporidium spp.	R.10.CRY.K.5/100
INgene q Equine Herpesvirus 1	R.14.HE1.K.5/100
INgene q Equine Herpesvirus 2	R.14.HE2.K.5/100
INgene q Equine Herpesvirus 4	R.14.HE4.K.5/100
INgene q Influenza A virus	R.10.IFA.K.5/100
INgene q Listeria monocytogenes	R.10.LMO.K.5/100
INgene q Pasteurella multocida	R.10.PAS.K.5/100
INgene q Pathogenic Leptospira	R.10.LEP.K.5/100
INgene q Piroplasma	R.10.PIR.K.5/100
INgene q Pseudomonas aeruginosa	R.10.PSE.K.5/100

Product	Article No.
INgene q Rhodococcus equi	R.10.REQ.K.5/100
INgene q Rhodococcus equi vapA	R.14.REV.K.5/100
INgene q Rotavirus A	R.10.RTA.K.5/100
INgene q Salmonella enterica	R.10.SEN.K.5/100
INgene q Staphylococcus aureus	R.10.SAU.K.5/100
INgene q Streptococcus equi	R.10.SEQ.K.5/100
INgene q Taylorella equigenitalis	R.14.TAY.K.5/100
INgene q Theileria equi	R.14.TEQ.K.5/100

PCR Kits for RABBIT



Product	Article No.
INgene q Bacteroides fragilis enterotoxina	R.10.BFT.K.5/100
INgene q Bordetella bronchiseptica	R.10.BBR.K.5/100
INgene BRUCE-LADDER V*	R.10.BRU.K.5/50
INgene q Brucella spp.	R.10.BSP.K.5/100
INgene q Brucella Typing MULTIPLEX	R.10.BRM.K.5TC/Q
INgene q Brucella Typing ROX MULTIPLEX	R.10.BRM.K.5TX/Q
INgene q Campylobacter coli	R.10.CAM.K.5/100
INgene q Campylobacter jejuni	R.10.CJE.K.5/100
INgene q Chlamydia abortus	R.10.CAB.K.5/100
INgene q Chlamydiae	R.10.CHL.K.5/100
INgene q Clostridioides difficile Toxin A	R.10.CDA.K.5/100
INgene q Clostridioides difficile Toxin B	R.10.CDB.K.5/100
INgene q Clostridium botulinum	R.10.CBO.K.5/100
INgene q Clostridium spiroforme	R.17.CSP.K.5/100
INgene q Coxiella burnetii	R.10.COX.K.5/100
INgene q Cryptosporidium spp.	R.10.CRY.K.5/100
INgene q Eimeria magna	R.17.EMA.K.5/100
INgene q Eimeria spp.	R.10.EIM.K.5/100
INgene q Encephalitozoon cuniculi	R.10.ECU.K.5/100
INgene q Listeria monocytogenes	R.10.LMO.K.5/100
INgene q Myxoma virus	R.17.MYX.K.5/100
INgene q Pasteurella multocida	R.10.PAS.K.5/100
INgene q Pathogenic Leptospira	R.10.LEP.K.5/100
INgene q Pseudomonas aeruginosa	R.10.PSE.K.5/100
INgene q RHDV new variant	R.17.RHD.K.5/100
INgene q Rotavirus A	R.10.RTA.K.5/100
INgene q Salmonella enterica	R.10.SEN.K.5/100
INgene q Staphylococcus aureus	R.10.SAU.K.5/100

PCR Kits for AQUACULTURE



Product	Article No.
INgene q Aeromonas hydrophila	R.60.AHY.K.5/100
INgene q Aeromonas salmonicida	R.60.ASA.K.5/100
INgene q Flavobacterium psychrophilum	R.60.FPS.K.5/100
INgene q Tenacibaculum maritimum	R.60.TMA.K.5/100
INgene q VHSV	R.60.VHS.K.5/100
INgene q Vibrio anguillarum	R.60.VAN.K.5/100
INgene q Yersinia ruckeri	R.60.YRU.K.5/100

PCR Kits for MINK



Product	Article No.
INgene q AMDV	R.09.AMD.K.5/100

INSTRUMENTS

ELISA Analyzers

Comprehensive diagnostic solutions improve lab efficiency and minimize overall costs. We offer precise, compact and cost-efficient instruments supported with outstanding customer service.

These innovative, industry-leading instruments - ThunderBolt® and The BOLT™ - are the standard platforms for our ELISA-based analytical test kits including allergens, food pathogens, mycotoxins, veterinary drug residues, and animal health kits. We are delighted to provide one of the most complete, integrated, and innovative test offerings in the market.

ThunderBolt®



The ThunderBolt® is an innovative 2-plate, fully automated, open platform that is compact and cost efficient. The user friendly and flexible software is capable of programming a broad range of protocols. The ThunderBolt® is available for both ELISA and Chemiluminescent (CLIA) applications.

Key Benefits

- Fully-automated: load and walk away
- High capacity: 192 samples
- Open architecture: program any ELISA or Chemiluminescent (CLIA) protocol* (CLIA protocols require ELISA+CLIA reader option)
- Adaptable: capable of running many different protocols in a single batch
- Built-in reader: ultra-compact and fully-automated reader options
- Compact: smallest and lightest instrument in its class
- User-friendly and flexible software
- Extensive configuration – run up to 8 protocols in a single batch
- On-board camera: monitor internal operations in real-time

The Bolt™



The Bolt™, a one-plate ELISA+CLIA processor, shares many features of the ThunderBolt®, with a more customizable, lower throughput and cost-effective design. Our interactive user-friendly software provides a simple laboratory experience for instrument operation.

Key Benefits

- Space saving design – fits standard 60 cm lab bench
- 96 sample capacity
- Program any EIA and CLIA protocol
- High precision syringes
- Low consumables costs (no disposable tips)
- Exterior status indicator light
- Connectivity to a laboratory information system (LIS)

Modular Design with Optional:

- Convention incubator
- Linear shaker
- ELISA or ELISA+ CLIA Reader*

* CLIA protocols require ELISA + CLIA reader option



ThunderBolt®

Specifications	
Intelligent Racks	Automatic sample location management
System Architecture	Open, fully customizable
High Precision Micro-Syringe	Aspirate 1uL with $\leq 3\%$ CV
On-board Reader(s)	Spectrophotometer or Spectrophotometer + Fluorescence Combo Reader
Forced Convection Incubator	Evenly heats using forced air to eliminate "Edge Effect"
On-board Camera	Probe-mounted camera allows remote troubleshooting
Sliding Sample Tray	Easy loading and unloading of samples
Built-in Barcode Reader	Streamline loading and decrease sample tracking errors
Orbital MTP Shaker	Precise adherence to assay protocols
Small Footprint	Fits on a 60cm deep standard laboratory bench; weight: 30 kg (65 lbs)
Sample Capacity	192 patient sample positions
User Interface	MS Windows Graphical User Interface (Windows 7 or above)
CE Marked	Yes
Article No.	00300



The Bolt™

Specifications	
System Architecture	Open, fully customizable
High Precision Micro-Syringe	Aspirate 1uL with $\leq 3\%$ CV
On-board Reader(s)	Spectrophotometer or Spectrophotometer + Fluorescence Combo Reader
Forced Convection Incubator	Evenly heats to eliminate "Edge Effect"
Linear Shaker	Precise adherence to assay protocols / No-spill design
Small Footprint	Fits on a 60cm deep standard laboratory bench; weight: 27 kg (59.5 lbs)
Sample Capacity	96 patient sample positions
User Interface	MS Windows Graphical User Interface (Windows 7 or above)
CE Marked	Yes
Article No.	00500

RapidScan ST5-W Lateral Flow Assay Reader

Companies and laboratories that use lateral flow devices as a rapid test method need to obtain quick and reliable results for contamination testing. The RapidScan ST5-W Lateral Flow Assay Reader is an accurate, easy to use and highly flexible imaging platform used for lateral flow assay analysis. The instrument was designed specifically for field and in-process testing applications that require qualitative and quantitative test results.



Key Benefits

- **Ease-of-use:** the reader is easy to set up and operate, featuring an intuitive user interface with a colour touchscreen display.
- **Quantitative results** are obtained within a few minutes. Data can be stored on the reader then exported through a USB port.
- **Applications:** the reader is compatible with a wide range of allergen, GMO and glyphosate strip tests offered by Gold Standard Diagnostics. Additionally, the INgezim ASF CROM Ag, LFA for the detection of ASFV antigen in porcine blood samples, is also validated on the RapidScan reader.

Specifications	
Article No.	LFRSCAN002
Size and Weight	11x14x21 cm, 930 g
Display	5" LCD touch screen

GSD Absorbance 96 ELISA Reader

GSD Absorbance 96 is a new category of plate readers with the mission to simplify the workflow in the laboratory. The reader delivers a robust performance and accurate results with a small footprint.



Key Benefits

- 7x smaller than the smallest comparable reader
- Maintenance-free user experience
- 96 individual detection units enabling simultaneous signal detection
- Variety of available wavelength combinations
- No license fee for software use

Specifications	
Article No.	EIAREAD002
Size and weight	9.6 x 15.4 x 5.5 cm, 900g
Microplates types	96-well microplates
Wavelength selection	Example combinations (FWHM 10 nm): 450, 492, 562, 620 nm / 405, 450, 540, 630 nm / 492, 562, 605, 650 nm. Other filter combinations in the range of 400–1000 nm

Nucleic Acid Purification System: GSD Auto-Pure 96

GSD Auto-Pure 96 Nucleic Acid Purification System is an automatic extraction and purification instrument for DNA/RNA, proteins and cells. The purification technology is automated and enables high-speed, high-quality processing with no cross-contamination between the samples or reagent carry-over. Combined with different kinds of magnetic bead nucleic acid extraction kits, it can operate 1-96 samples or simultaneously and extract DNA and RNA rapidly, in 30-60 minutes.



Key Benefits

- Simple, intelligent operation
- High quality and rapid extraction
- Multiple pollution control
- Remote monitoring by app
- Reliable structure and stable operation

Specifications

Article No.	GSD-Auto-Pure96
Throughput	1-96
Process volume	50-1000 µl
Consumables	Deepwell plate, Elution plate, Magnetic tip comb

Real-time PCR System: AriaMX™

The AriaMx Real-Time PCR system is a fully integrated qPCR solution for amplification, detection, and data analysis, combining a novel thermal cycler, an advanced optical system with LED excitation source, and comprehensive data analysis software.

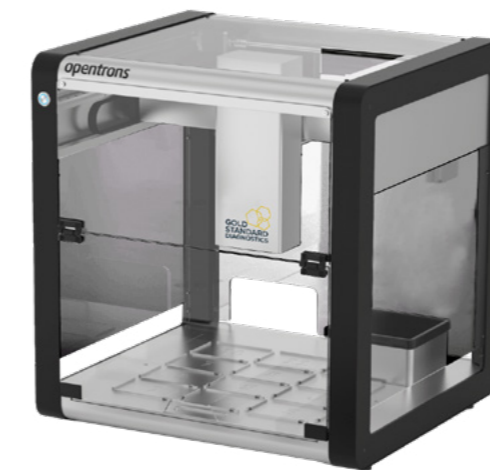


Key Benefits

- Usable with many fluorescence detection chemistries, including SYBR Green and EvaGreen dyes, and fluorogenic probe systems such as TaqMan
- Proprietary rapid hot-start enzymes and fastest industry high-resolution melt reagents
- Intuitive operation with a touch screen interface
- Modular optics and open reagent platform for increased agility
- Multiplex capability with six filters for five plexing and two to five channels
- Intuitive open-source software and robust data analysis with proprietary algorithms

OT-2 Liquid handler for BACGene Use **NEW!**

Real-time PCR solutions like BACGene are used worldwide for the detection of foodborne pathogens, delivering reliable results substantially faster than classic detection methods. The OT-2 liquid handler provides an automation solution for the manual steps of the BACGene workflow, serving as a platform to automate sample input up to the PCR plate preparation:

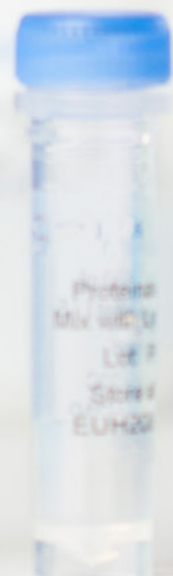


- Enhanced Accuracy and Reliability**
 - Reduction of human error - no repeated training needs
 - Increased consistency between runs
- Increased efficiency in your laboratory**
 - More than 2x higher productivity – per sample/hour
 - Small footprint to run both lysis and PCR prep – app. 63 x 57 x 66 cm
- Costs and Resources Optimization**
 - Price sensitive solution to support an optimized resource planning
 - Frees up your technician by approx. 42 min per full plate

Your Complete Package

Amount	Name	Product Description	Ordering Details
	OT-2 Starter package	OT-2 liquid handler including respective moduls and pipettes to run BACGene workflow in an automated setup. <ul style="list-style-type: none"> • 2x Aluminium holder • Heating module including Aluminium holder • Lysis reagent holder • 2 distinct multi-channel pipettes for up to 200 and 20 µL volumes 	HU0060910
3x*	P20 - 20 µL tip box (96)	Filter tips for P20 usage	HU0060906
2x*	P300 - 200 µL tip box (96)	Filter tips for P300 usage	HU0060907
1x*	Service Package	Yearly maintenance checks	HU0060908

*As an example a mixed full plate (46 samples Listeria + 46 samples Salmonella) will need 199 tips divided into 146x20µL tips in 3 separate tip boxes and 53x200µL tips in 2 separate tip boxes.



Get product information and purchase kits conveniently online:

